

8

7

6

5

4

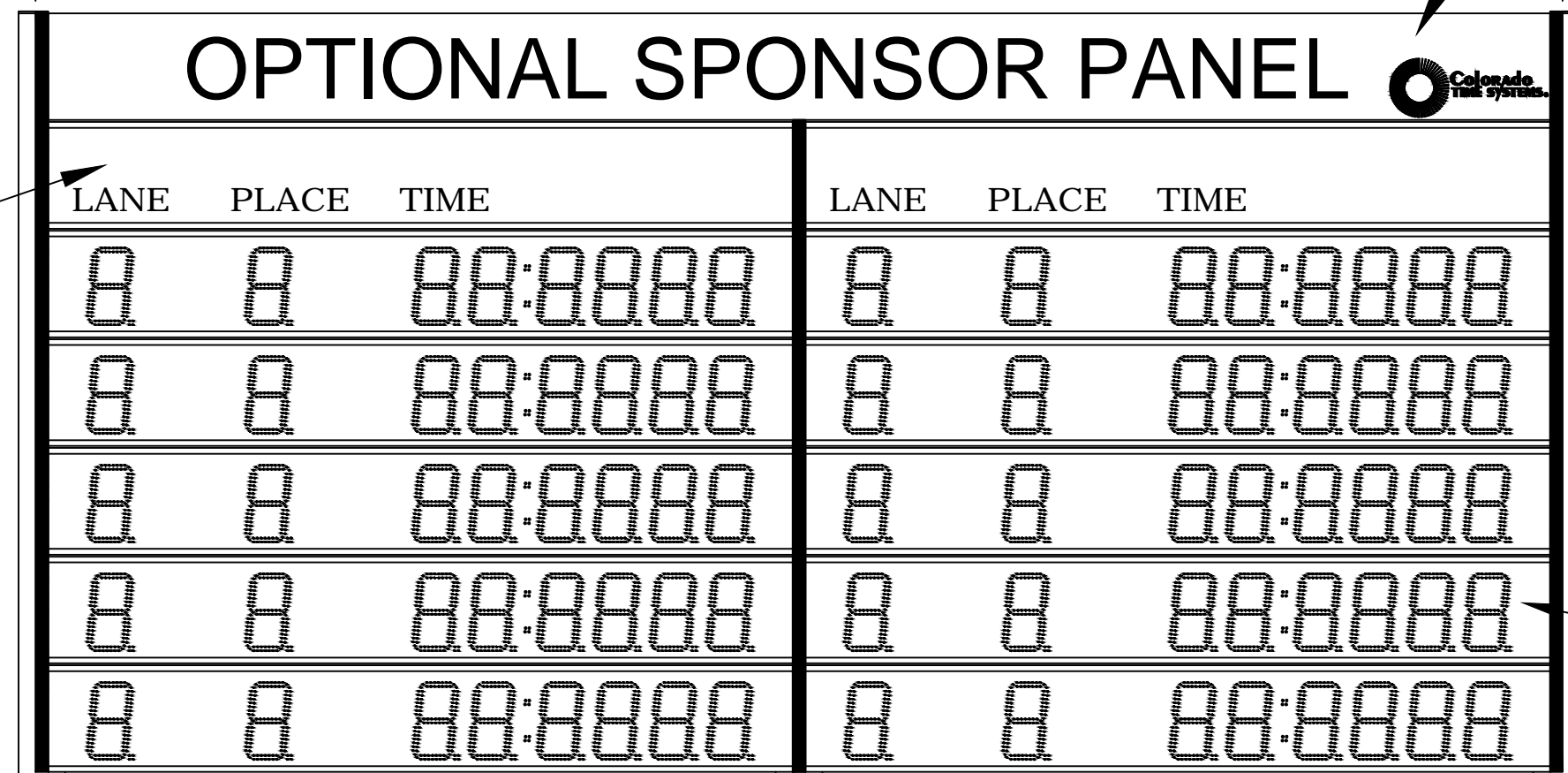
3

2

1

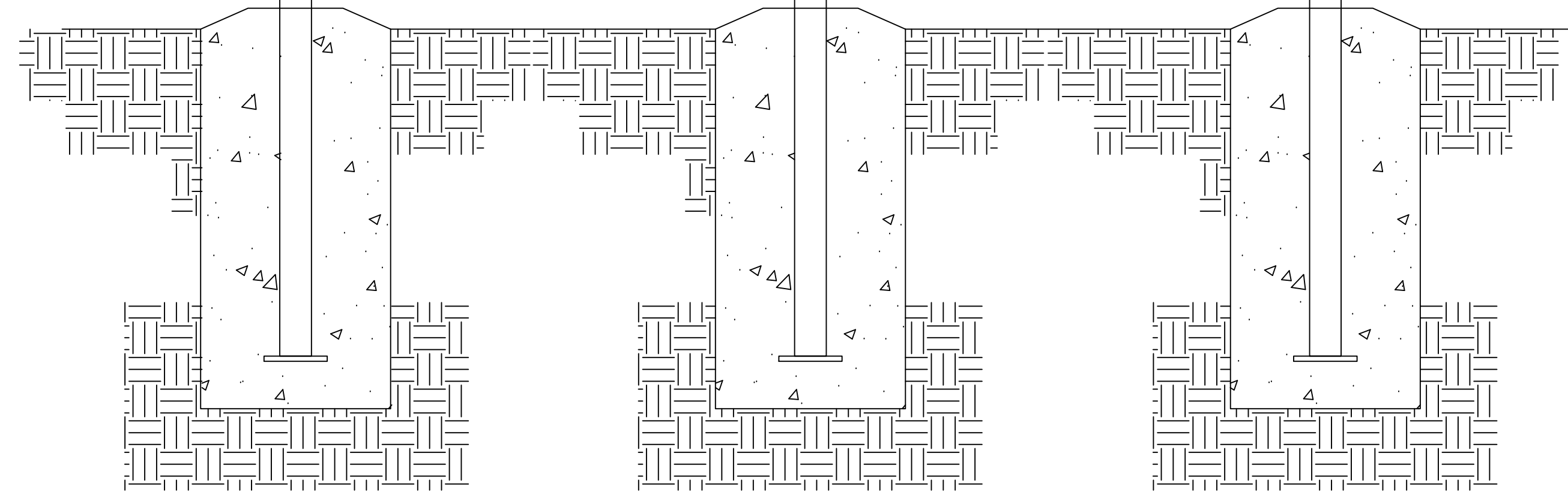
BILL OF MATERIAL					
ITEM	QTY	DESCRIPTION	CTS P/N	MFG P/N	

SPONSOR PANEL ASSEMBLY
2 REQUIRED
P/N SP-LED WITH OPTIONAL ARTWORK
(BY COLORADO TIME SYSTEMS)
WEIGHT 26lbs EACH

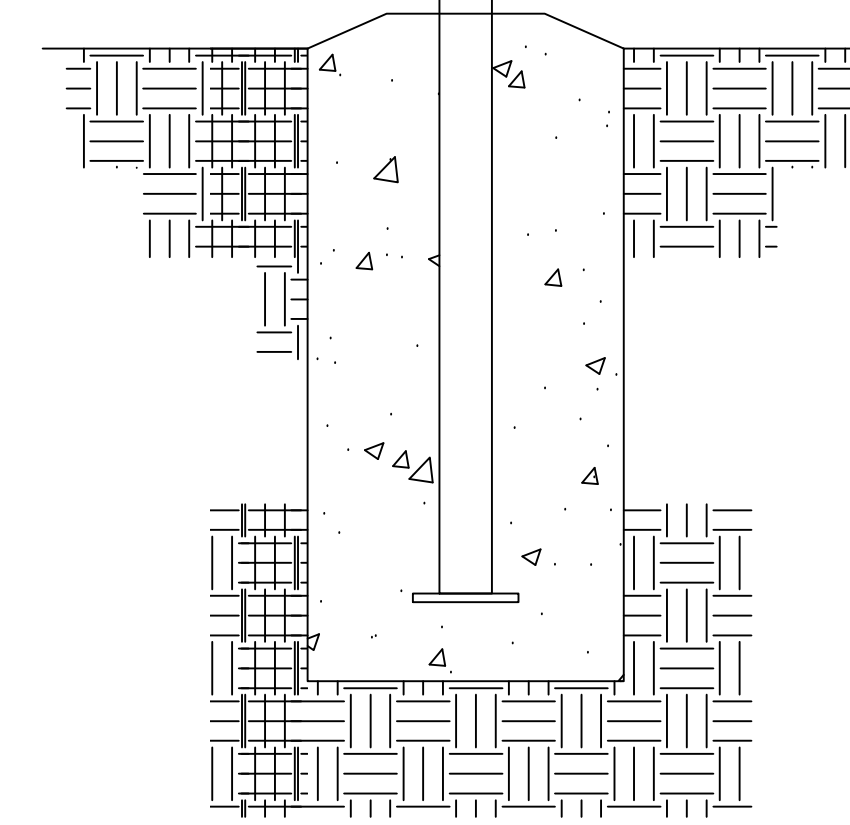


LANE PLACE TIME
SCOREBOARD DISPLAY
2 REQUIRED
P/N: SP-LED WITH LN/PL/TIME
(BY COLORADO TIME SYSTEMS)
WEIGHT 26lbs EACH

LANE PLACE TIME 8-DIGIT
SCOREBOARD DISPLAY
10 REQUIRED
P/N: LEDR
(BY COLORADO TIME SYSTEMS)
WEIGHT 40lbs EA

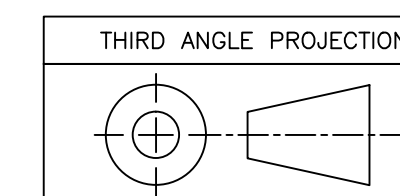


FRONT VIEW



SIDE VIEW

- NOTES:
- TOTAL WEIGHT - 504 LBS - INCLUDES DISPLAY PORTION ONLY
 - DIMENSIONS ARE APPROXIMATE AND ARE SUBJECT TO CHANGE DUE TO DETAILED DESIGN CONSIDERATIONS
 - THIS DRAWING FOR DESIGN ONLY - PLEASE CONSULT CTS PRIOR TO ANY FABRICATION/INSTALLATION
 - ONLY APPROVED SHOP DRAWINGS SHOULD BE USED FOR CONSTRUCTION
 - ALL CONSTRUCTION AND FABRICATION MUST MEET ALL APPLICABLE LOCAL, STATE, AND NATIONAL CODES
 - ALL ON-SITE WORK TO BE DONE IN ACCORDANCE WITH OSHA AND ALL LOCAL CODES THAT APPLY
 - CTS PROVIDES DISPLAY, UNISTRUT, AND BRACKETING - ALL OTHER STRUCTURAL COMPONENTS AND FABRICATION MUST BE PROVIDED BY OTHER



UNLESS OTHERWISE SPECIFIED:
VARIATIONS IN FORM FOR UNMACHINED FEATURES ARE PERMITTED WITHIN ESTABLISHED COMMERCIAL STANDARDS. ALL EDGES AND CORNERS 0.005-0.020 (APPROX RADIUS OR CHAMFER) - ALL FILLETS 0.005-0.020 (APPROX RADIUS) - SCREW THREADS PER ANSI B1.1 - PIPE THREADS PER ANSI B1.1 - SURFACE ROUGHNESS PER ANSI B46.1 - SURFACE ROUGHNESS ON HOLES 250 MAX

ALL DIMS IN INCHES UNLESS OTHERWISE NOTED INCH [MM] 1 INCH = 25.4MM	DRAWN BY C. CARR	DATE 8/9/12	1551 E. 11th. St. Loveland, CO 80537 P: (970) 667-1000 F: (970) 667-5876
TOLERANCES EXCEPT AS NOTED	ENG. APPROVAL	PROJECT ENG.	
INCHES X ± N/A .X ± .XX ± N/A .XX ± .XXX ± N/A .XXX ±	MM .X ± .XX ± .XXX ±	TRADE SECRET	TITLE 10 LANE SWIM 3-POLE SCBD LAYOUT
ANGLES ± 1°	MATERIAL SEE BILL OF MATERIAL	FINISH	SCALE 1/2"=1'
			REVISIONS A INITIAL RELEASE 8/9/12 ERS REV DESCRIPTION ECO/PCO # DATE APPROVED
			SIZE D 10-2-3-14-002 SHEET 1 OF 3

8

7

6

5

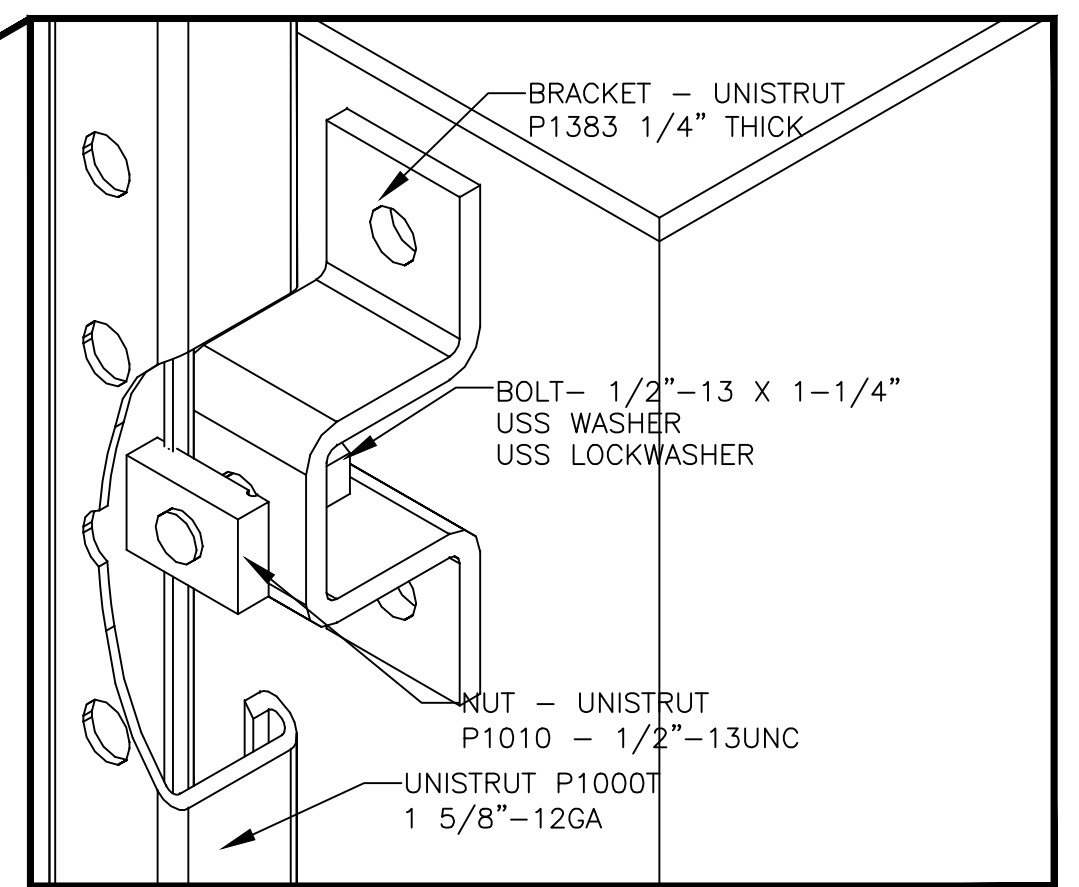
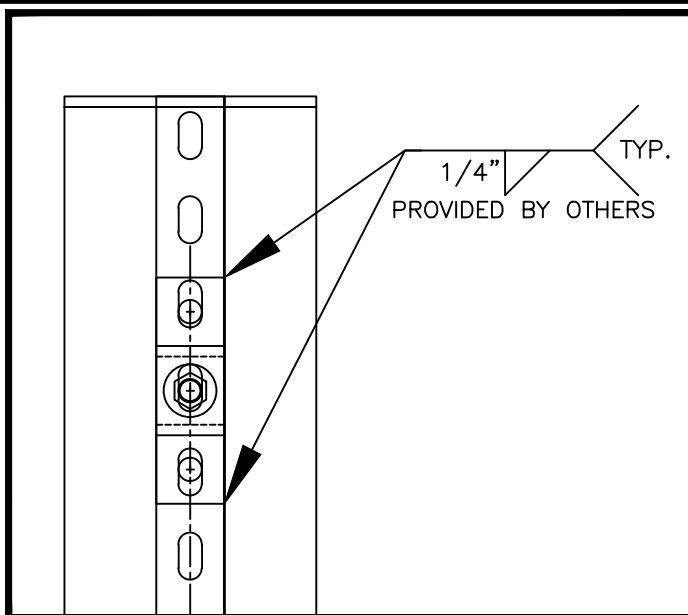
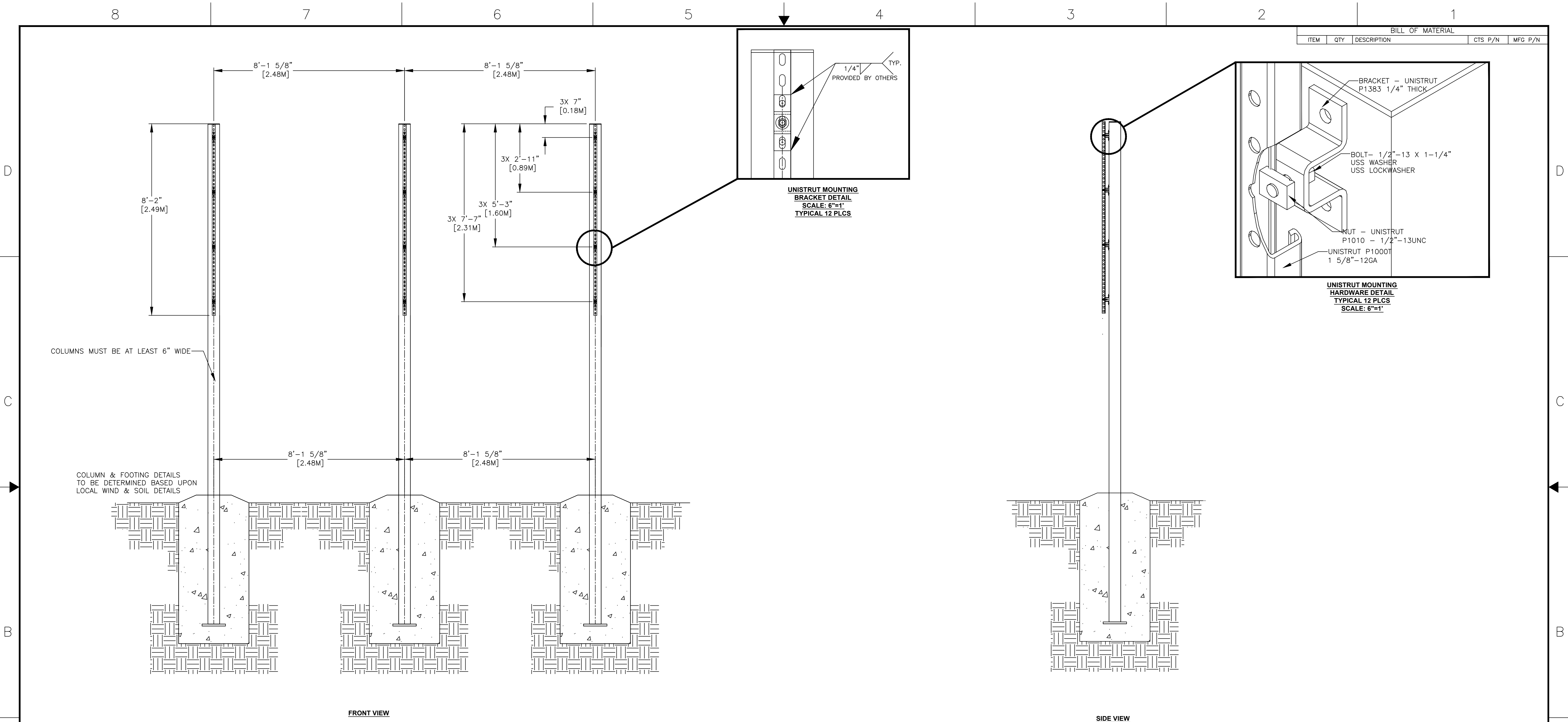
4

3

2

1

BILL OF MATERIAL				
ITEM	QTY	DESCRIPTION	CTS P/N	MFG P/N



FRONT VIEW

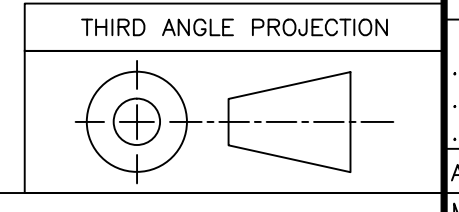
SIDE VIEW

REV	DESCRIPTION	ECO/PCO #	DATE	APPROVED
A	INITIAL RELEASE		8/9/12	ERS

DRAWN BY		DATE
C. CARR		8/9/12

TOLERANCES EXCEPT AS NOTED	
INCHES	MM
.X ± N/A	.X ±
.XX ± N/A	.XX ±
.XXX ± N/A	.XX ±

TRADE SECRET



UNLESS OTHERWISE SPECIFIED:
 VARIATIONS IN FORM FOR UNMACHINED FEATURES ARE PERMITTED WITHIN ESTABLISHED COMMERCIAL STANDARDS. ALL EDGES AND CORNERS 0.005-0.020 (APPROX RADIUS OR CHAMFER) - ALL FILLETS 0.005-0.020 (APPROX RADIUS) - SCREW THREADS PER ANSI B1.1 - PIPE THREADS PER ANSI B1.1 - SURFACE ROUGHNESS PER ANSI B46.1 - SURFACE ROUGHNESS ON HOLES 250 MAX

MATERIAL	SEE BILL OF MATERIAL
FINISH	

1551 E. 11th. St.
 Loveland, CO 80537
 P: (970) 667-1000
 F: (970) 667-5876

Colortrac
 TIME SYSTEMS

TITLE 10 LANE SWIM 3-POLE
 STRUCTURAL DETAILS

DO NOT SCALE THIS DRAWING

TRADE SECRET

REVISIONS

DATE: 8/9/12

SCALE: 1/2"=1'

SHEET 2 OF 3

8

7

6

5

4

3

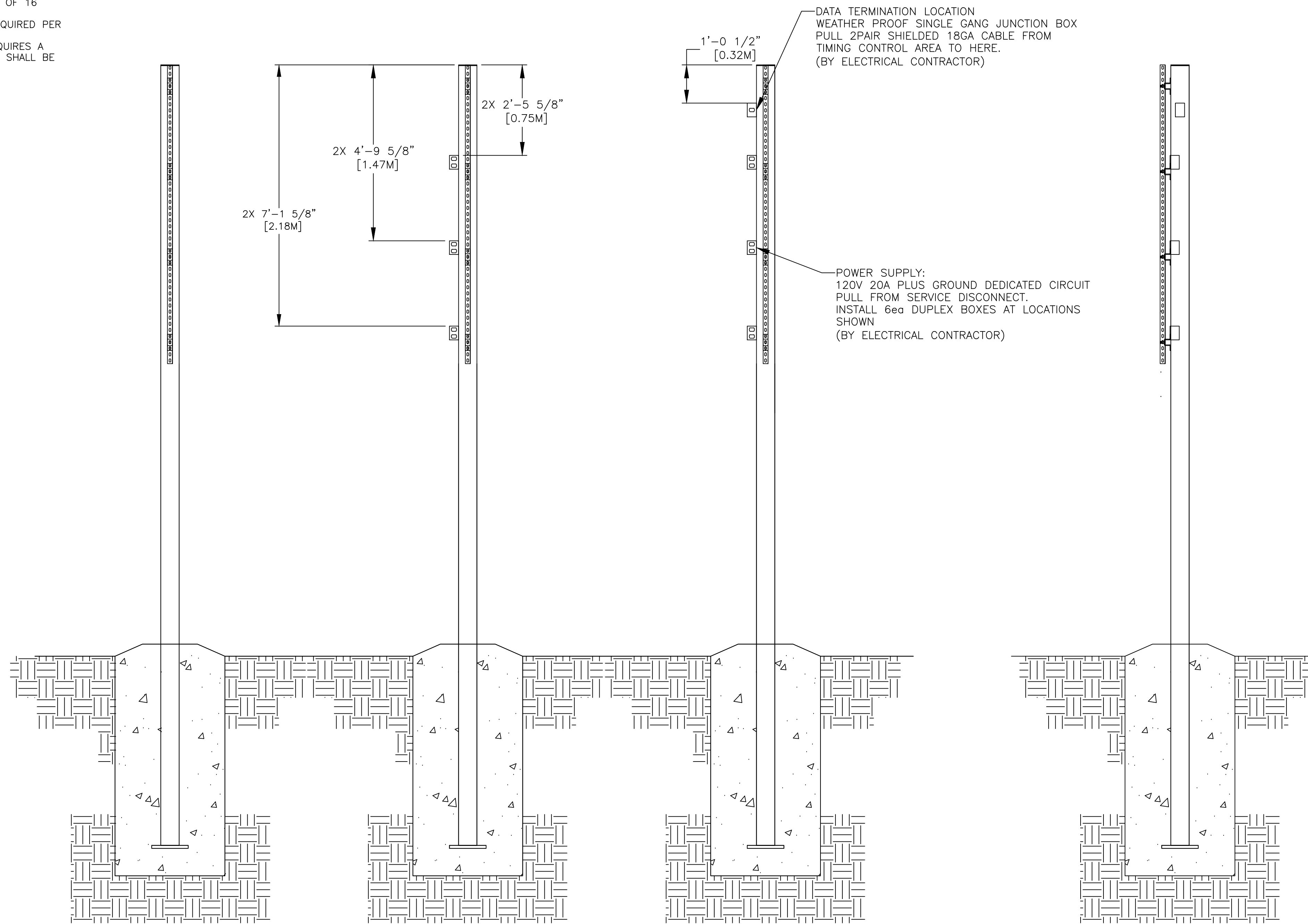
2

1

BILL OF MATERIAL				
ITEM	QTY	DESCRIPTION	CTS P/N	MFG P/N

- NOTES:
- EACH DUPLEX RECEPTACLE IS 125V, USE LEVITON #5352 OR EQUIVALENT.
 - RECEPTACLES MUST BE IN PLACE BEFORE CTS INSTALLATION.
 - POWER REQUIREMENTS: 120V, 1AMP PER SCOREBOARD MODULE MAXIMUM OF 16 MODULES PER 20A CIRCUIT.
 - SINGLE GANG WALL BOX WITH BLANK PLATE FOR DATA CABLE. ONE REQUIRED PER DISPLAY.
 - CONTROL CIRCUIT SHALL BE 125V 20A. NATIONAL ELECTRICAL CODE REQUIRES A MEANS OF DISCONNECT AT THE LOCATION OF THE SIGN. SCOREBOARD SHALL BE WIRED IN ACCORDANCE WITH NATIONAL ELECTRIC CODE ARTICLE 600-6.

***IT IS EXTREMELY IMPORTANT THAT THE CIRCUITS USED TO POWER THE SCOREBOARD NOT BE SHARED WITH OTHER DEVICES. THE SCOREBOARD IS SENSITIVE TO "NOISE" ON THE AC POWER LINE.

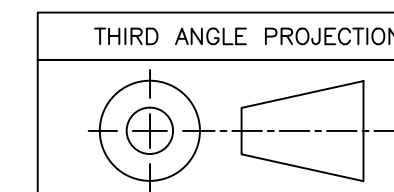


PLAN VIEW

SIDE VIEW

REV	DESCRIPTION	ECO/PCO #	DATE	APPROVED
A	INITIAL RELEASE		8/9/12	ERS

DRAWN BY		DATE	
C. CARR		8/9/12	
ENG. APPROVAL			
PROJECT ENG.			
DO NOT SCALE THIS DRAWING			
TRADE SECRET			
MATERIAL		SEE BILL OF MATERIAL	
FINISH			
UNLESS OTHERWISE SPECIFIED: VARIATIONS IN FORM FOR UNMACHINED FEATURES ARE PERMITTED WITHIN ESTABLISHED COMMERCIAL STANDARDS. ALL EDGES AND CORNERS 0.005-0.020 (APPROX RADIUS OR CHAMFER) - ALL FILLETS 0.005-0.020 (APPROX RADIUS) - SCREW THREADS PER ANSI B1.1 - PIPE THREADS PER ANSI B1.1 - SURFACE ROUGHNESS PER ANSI B46.1 - SURFACE ROUGHNESS ON HOLES 250 MAX		The information and data contained herein is secret and is submitted in confidence, and shall not be disclosed, used, or duplicated for any purpose whatsoever without the prior written permission of Colorado Time Systems, Inc. 1501 E. 11th Street, Loveland, Colorado, 80537. This legend shall be marked on any reproduction hereof in whole or in part. Receipt of this document shall be deemed to be an acceptance of the conditions specified herein.	
TITLE: 10 LANE SWIM 3-POLE ELECTRICAL DETAILS		DRAWING NUMBER: D10-2-3-14-002	
SCALE: 1/2"=1'		SHEET 3 OF 3	



1551 E. 11th. St.
Loveland, CO 80537
P: (970) 667-1000
F: (970) 667-5876

TRADE SECRET

SIZE: D10-2-3-14-002

SCALE: 1/2"=1'

SHEET 3 OF 3

8

7

6

5

4

3

2

1