

## CADDY ASSEMBLY INSTRUCTIONS- 20" WIDE RJPLs

Parts of this assembly require two people.

Parts:           2 rectangular frames (1 with wheels, 1 with brackets)  
                  2 side panels with sloped rails  
                  4 T-brackets with attached hardware  
                  8 black plastic end caps with plastic hardware

Tools:           3/16 Hex-L-Key (included)



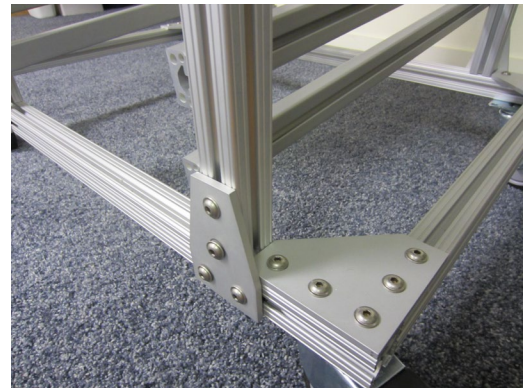
- 1) Start with the base rectangle (the one with the wheels attached). Set it on the floor so that the wheels are down.

- 2) Slide two t-brackets into each side, as shown below. If they do not slide easily, loosen, but do not remove, the screws holding the T-nuts



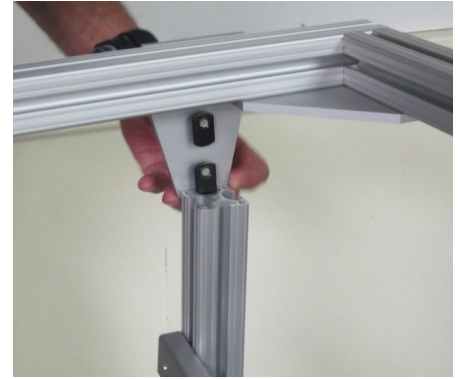
NOTE: The side panels have an X at the top of the end posts and the rails go smooth side to the inside.

- 3) Lift one side panel and rest it across the side rails of the base, as shown below, left. One person can hold this in place while the other slides the T-brackets to line up with it. Then, the person holding the side should lift it to the top of the T-bracket. The other person aligns the T-nuts so that they slide into the upright pieces of the side rail, as shown below.



- 4) Slide the side panel on the base so it is flush with the corner brackets for the swivel wheels as shown above, right. Partially tighten the screws with the hex key.
- 5) Measure from left edge of the t-brackets that you just partially tightened to the left edge of the remaining t-brackets. The distance needs to be 21.75 inches (55.25cm). Partially tighten them in place, and mount the other side panel to them the same way you did the first one.

6) Lower the top onto the uprights for the side panels, sliding the t-nuts from the brackets attached to the top into the channels on the uprights, as shown below. If necessary, slide the t-brackets on the bottom so the sides are square top and bottom. Partially tighten.



7) Slide two relay judging platforms (RJPLs) onto the caddy – one on the top shelf and one on the bottom. They should slide in easily, without rubbing the uprights, and they shouldn't fall through. Adjust the side panels if necessary. Fully tighten all screws.

8) Add the end caps to the exposed ends (four each on the base and the top frame) by pushing the plastic screw through the end cap and firmly pushing that into the exposed end.