

Portable Scoreboards



User Guide



**Colorado
TIME SYSTEMS**

A **PLAYCORE** Company

F983 Rev.202007

Manufacturer:

Everlast Climbing Industries, Inc.
DBA Colorado Time Systems
1551 East 11th Street
Loveland, CO 80537 USA

Sales: 1-800-279-0111 or +1 970-667-1000

Service: 1-800-287-0653 or +1 970-667-1000
Service Fax: +1 970-667-1032

Web: www.coloradotime.com
Email: support@coloradotime.com

Product Identification

Product: Multisport Portable Scoreboards
Model Numbers: MS-0028 through MS-0036

Power Specification

320W power supply: 100-240V, 50/60Hz, max 4A

Information in this manual is subject to change without notice. Pictures and illustrations may not accurately depict your version. Please check our website for the most current information; our user manuals are available online in the customer service section of our website.

Contents

Product Overview	1
Installation	1
Setting Module, Channel and PAN	
Installation Overview	2
Wall Mount Versions	
Portable Versions	
Operating Instructions	6
Batteries	
Tabletop controller	
Handheld controller	
Sports Timer	
Synchronizing Time of Day	
Replacing batteries.....	8
Standards followed.....	10

Product Overview

Portable scoreboards display time, 2-digit score and period for a variety of team sports. Optional dots can display sport-specific information such as possession and bonus indicators or time outs remaining.

Some versions are designed to be mounted on a wall and run from AC power only, and do not have batteries. Other versions are designed to be portable scoreboards, and have batteries, battery charging circuits and battery charging indicators. The portable versions of the display mount to a variety of moveable structures, which can be ordered separately from Colorado Time Systems.

The unit is controlled by a certified radio with an internal patch antenna which is protected from damage. They can also be controlled with wired data from CTS sports consoles. The displays feature an indoor/outdoor metal enclosure and plastic weather covers over the digits. An ambient light sensor detects external light and shadows and adjusts the brightness of the digits for optimal intensity.

The internal, protected horn creates multiple customizable sounds with different tones and volumes selectable through the tabletop controller. This allows the same physical horn to serve multiple functions (e.g., both game horn and shot clock horn) and have different sounds for each function.

Installation

Setting Module, Channel and PAN

In order to receive data from a controller, a scoreboard must be set to the same Channel and PAN as the controller. Additionally, the scoreboard's Module number must be selected as active in the appropriate menu of the controller (see controller manual for more information.) If two or more scoreboards are set to have the same Channel, PAN, and Module, those scoreboards will show the same data. If two controllers are set to the same Channel, PAN, and Module, erroneous data will be displayed on the scoreboard(s).

If you have more than one scoreboard and are using the tabletop controller, map out your scoreboard strategy, and set the channel, PAN and module for each board accordingly. For expanded examples of how to do this, refer to our website www.coloradotime.com.

The default factory settings are Channel 4, PAN 0 and Module Address 1.

To set the module, channel and PAN:

1. Make certain the unit is disconnected from AC power and turned off.
2. Remove the weather cover over the time digits (top center of the board) by turning the slotted studs a quarter turn using a flathead screwdriver so that they are vertical. Remove the weather cover and set it in a safe place
3. Remove the digit to the left of the colon. Using a Phillips head screwdriver, unscrew the retaining screws and set them in a safe place. Carefully lean the digit against the enclosure.
4. Set the module, channel and PAN using the dip switches on the circuit board immediately behind the digit you removed:

DIP switch settings (Off = 0, On = 1)

Module: Switches **1-5 of S1**. 01 to 1E are valid.

00010	08	00001	10	00011	18		
10000	01	10010	09	10001	11	10011	19
01000	02	01010	0A	01001	12	01011	1A
11000	03	11010	0B	11001	13	11011	1B
00100	04	00110	0C	00101	14	00111	1C
10100	05	10110	0D	10101	15	10111	1D
01100	06	01110	0E	01101	16	01111	1E
11100	07	11110	0F	11101	17	11111	1F (this is test mode)

NOTE: switches 6-8 of S1, next to the Module switches, should not be changed. Doing so will cause the display to cease functioning properly.

Channels: Switches **1-4 of S2**. 0 to 11 are valid

PAN ID: Switches **5-8 of S2**. 0 to 15 are valid

0000	0	0010	4	0001	8	0011	12
1000	1	1010	5	1001	9	1011	13
0100	2	0110	6	0101	10	0111	14
1100	3	1110	7	1101	11	1111	15

5. Reattach the digit and replace the weather cover. Turn the slotted studs to horizontal. They will snap into place with moderate pressure.

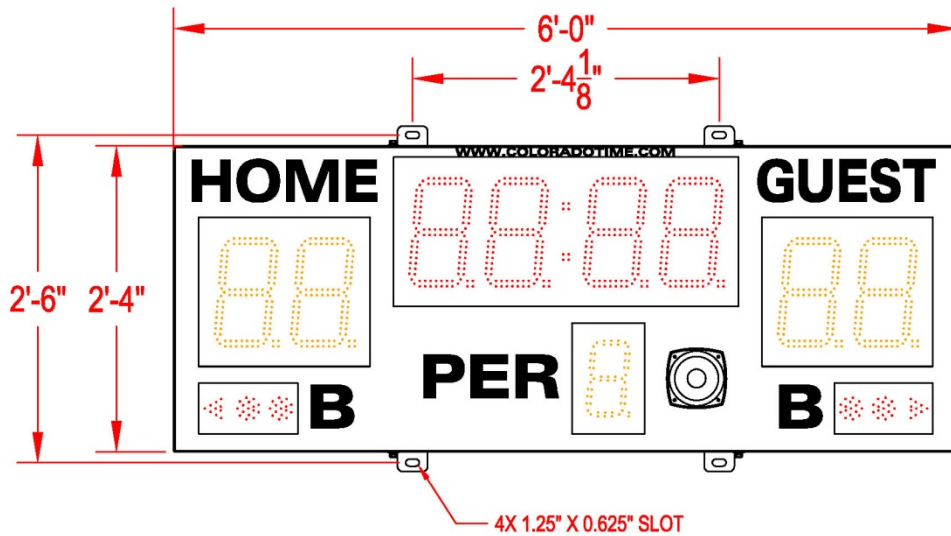
Installation Overview

Some models are designed to be mounted on a wall or fixed mounting structure and to run from AC power only (no batteries). The model number is on the serial number label on the side of your scoreboard. The wall mount model numbers are MS-0028, MS-0029 and MS-0030. If you are installing one of these models, please skip ahead to the Wall Mount Versions section, on page 3.

Most models (MS-0031 through MS-0036) are designed to be portable scoreboards. If you have one of these versions, skip ahead to the Portable Versions section, on page 4.

Wall Mount Versions

Determine the location for the display. It is the owner's responsibility to choose a location where the wall composition or mounting structure can support the weight of the display without batteries, which is 40 pounds (18.1 Kg). Installation must meet all national and local codes.



Electrical Installation

Connect the wall-mounted scoreboard to standard outlet (120V or 230V) 9 feet from right end of display with the supplied power cord. The display is grounded through the power connection. For an outdoor installation, the receptacle must be outdoor rated.

If using wired data, scoreboard cables must be supported a minimum of every 6 feet when not in conduit. When conduit is used, the conduit must be secured every 3 feet at minimum. Scoreboard cables must not be spliced in either indoor or outdoor applications. If using wired data make sure there are no sharp bends in the cable. A bend in RS-485 cables must have a minimum bend radius of 1.2" and a bend in RS-232 cables must have a minimum bend radius of 1.0".

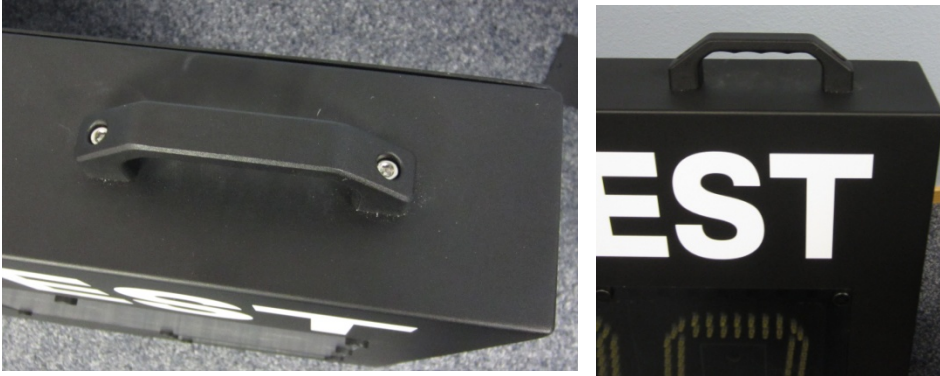
Portable Versions

The portable versions of the display mount to a variety of moveable structures, which can be ordered separately from Colorado Time Systems. All moveable structures include handles for the scoreboard.

Handles

Tool needed: 3/16" hex driver (Allen wrench)

Install the handles to the top of the scoreboard in the threaded mounting holes with the 1-inch socket cap screws.



Caddy

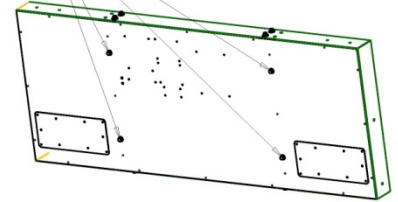
This version is shown on the front cover of this manual.

Tools needed: 9/16" socket wrench

1. Remove the washers and bolts indicated from the back of the scoreboard, and put them in a safe place for later use to mount the display to the caddy.
2. Push the caddy arms down to their lowest point and lock in place with the locking pin.
3. Rest the scoreboard on the bumpers of the caddy.
4. Bolt securely into place with the washers and bolts removed earlier.
5. Unlock the caddy's arms with the locking pin. Swing the arms up to place the scoreboard at the height you want it, and lock in place with the locking pin.

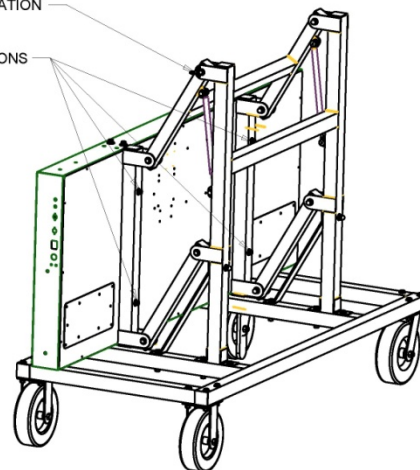
The caddy can support a center tray and one or two side trays, designed to hold scoreboard accessories including controller(s) and shot clocks. Trays can be ordered separately. Simply set the trays in place.

4X BOLT LOCATIONS



LOCKING PIN LOCATION

4X BOLT LOCATIONS

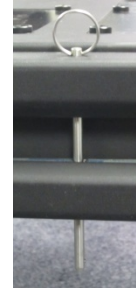
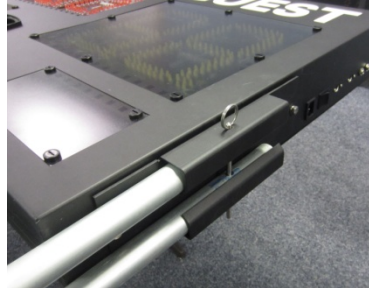


Stands

Tools needed: adjustable wrench or 7/16" nut driver

The stand kit includes handles, stands, stand brackets and the necessary hardware.

1. Attach the brackets to the sides of the scoreboard with the ½-inch screws and the split washers. The washer goes between the screw and the bracket. Tighten with the adjustable wrench or nut driver.



2. Lay the scoreboard(s) on a table and slide the pipe stands in so that on each side, one foot is facing the front of the board and one is facing the back, as shown. Insert the speed pins to hold the stands in place.
3. Turn the scoreboard(s) right side up to rest on the stand.



DO NOT use stands in situations with high winds.

Short Legs

Tools needed: adjustable wrench or 7/16" nut driver

The short legs kit includes handles, legs, and hardware to attach them all. Attach the legs with the hardware included to the threaded mounting holes in the bottom of the scoreboard.

Operating Instructions

Batteries

When used indoors and away from water, the portable versions of the scoreboard can be run either on battery or AC power.

When used outdoors or near a pool deck or other water, the portable scoreboard must be run from battery power only. Fully charged batteries will run the scoreboard for about 10 hours.

If the batteries are discharged too far, the scoreboard will automatically shut down to prevent immediate damage. Running on low voltages greatly stresses lead acid batteries and shortens their functional life.

You can extend the life of the batteries by recharging them for a minimum of 8 hours immediately after each use and by making sure that the scoreboard is switched off when not in use. To recharge your batteries, simply plug the scoreboard in to AC power. The scoreboard should only be charged indoors and away from water. The battery indicators on the right end of the scoreboard will glow green while the batteries are charging. When the batteries are fully charged, the scoreboard goes to trickle charge to keep them full.

You can extend the life of the batteries by keeping the scoreboard plugged in while in storage.

The scoreboard can display data it receives from a tabletop controller, a handheld controller, or from a sports console such as the System 6.

Tabletop controller

Follow the instructions on the tabletop controller quick reference sheet to set the tabletop controller to the same channel, PAN and module as the scoreboard(s) you want to control with it.

You can also turn off the ambient light sensor and set a specific intensity with the tabletop controller.

Follow the instructions on the quick reference sheet for the specific sport you are displaying.

Handheld controller

Follow the instructions in the handheld controller manual to set the handheld controller to the same channel, PAN and module as the scoreboard you want to control with it. Then follow the instructions for baseball, or follow the general instructions for other sports.

Sports Timer

The portable scoreboard can display Water Polo data from a CTS System 6 or System 5 sports timer. You can also turn off the ambient light sensor and set a specific intensity with the System 6.

For information to display correctly on the portable scoreboard, four of the sports timer's scoreboard channels **must** be set to the factory default scoreboard channels.

Specifically,

Channel 1 displayed on Module 1

Channel 2 displayed on Module 3

Channel 5 displayed on Module 0D

Channel 12 displayed on Module 5 (only applies to System 6; not available on System 5)

You can easily set all scoreboard channels to the factory defaults through the Scoreboard menu, Define Module submenu, by choosing Default Scbds. Refer to your System 6 or System 5 Water Polo manual for more information.

In addition, on a System 6, also go to the Game Setups menu, Scoreboard Time Display submenu, and choose "Don't Show Running Tenths" instead of "Show Running Tenths."

Connect your Sports Console to the scoreboard in one of two ways:

1. Directly with data cables (R-xxDC)
2. Connect the Sports Console to a 2.4 GHz wireless adapter (WA-2) and follow the instructions in the WA-2 user manual to set it to the same channel and PAN as the scoreboard(s) you want to control. Be sure to set the dip switch for Sports Console to Multisport Scoreboard.

Synchronizing Time of Day

To set multiple scoreboards to the same time, they must be set to the same channel and PAN (See page 1).

Designating Leader/Follower with WTTC, WA-3 or WA-2

1. Connect a WTTC, WA-3 or WA-2 to your computer using a USB cable.
2. Make sure the Channel and PAN are set to match your scoreboard.
 - a. WA-3 or WA-2: use the dipswitches on the device
 - b. WTTC: use the on-screen menu. After checking /setting the Channel and PAN and saving any changes, turn the unit off and then on again and leave it at the Sport Selection menu.
3. From your computer, open the MultiSport Firmware Reprogramming tool.
 - a. If you do not have this tool, download it from the CTS website at <https://www.coloradotime.com/support-overview/installation-methods>. Choose the MultiSport tab and download MultiSport Display Firmware.
4. Click "Scan for Devices"
5. Select your attached WTTC or WA-3/WA-2 (WA-3 will be listed as WA2)
6. Click "Get Sub-Devices"
7. Select the scoreboard you wish to set as leader.
 - a. Click the "Enable (as Leader)" button at the bottom of the screen.
 - b. The scoreboard will display **LEAD** for a few seconds

8. One by one, select the scoreboard you wish to set as follower.
 - a. Click the “Enable (as Follower)” button at the bottom of the screen.
 - b. The scoreboard will display **FOLL** for a few seconds
9. Close the software and disconnect you WTTTC, WA-3 or WA-2.

Setting Time of Day and Changing Channel with Wireless Tabletop Controller (WTTTC)

For tabletop controller (WTTTC), enter any sport and press the Menu button. Select “Set Time”. Time of Day from WTTTC will override the time on the leader and all follower clocks and scoreboards.

To change the channel and PAN, select “Scoreboard Options” in the Menu. When finished, press Clear to exit the menu.

Setting Time of Day and Changing Channel with Wireless Handheld Controller (WHC)

For handheld controller (WHC), enter the Menu and select “Time of Day”. Time of Day from WHC will override the time on the leader and all follower clocks and scoreboards. To change the channel and PAN, select “Connections”

Time of Day from a Sports Console (Gen 7, System 6, System 5)

Gen7 timers will receive time of day from the attached laptop and transmit that time to leader clocks/scoreboards that are turned on and on the same channel and PAN. You can also manually send time of day from the scoreboard settings screen. The leader will update the followers.

System 6 and System 5 sports consoles will send time of day to leader clocks/scoreboards connected to them via RS-232 or wirelessly from WA-3/WA-2 on the same channel and PAN. The leader will then update the followers.

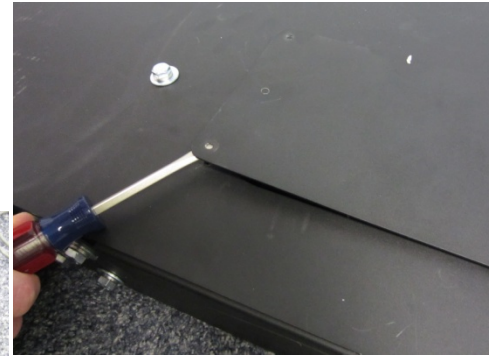
Replacing batteries

Eventually, your batteries will fail to hold a charge and will need to be replaced. Batteries can only be replaced with Powersonic PS1270 UL recognized (MH20845) gel cell batteries. The portable scoreboards take 4 batteries, which should all be replaced at the same time. These are available from Colorado Time Systems (part number R-420-003).

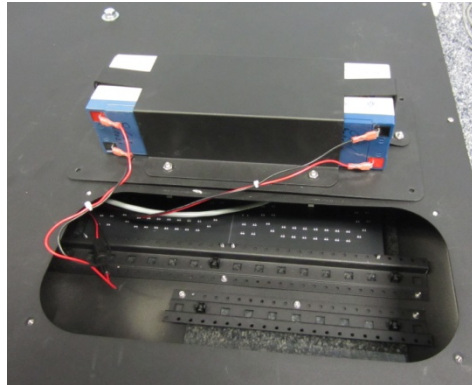
Tools required: Phillips head screwdriver, 11/32 socket driver

1. Make sure the scoreboard is disconnected from AC power and that the power switch is turned off.
2. If your scoreboard is mounted on a caddy, remove it from the caddy.

3. Place scoreboard face down on a protected work surface; two people recommended.
4. Remove the screws and washers from around one of the battery/backplate assemblies, and put them in a safe place for later installation.
5. Use a screwdriver or similar tool to gently pry up the battery/backplate assembly.



6. Gently place assembly on back of enclosure as shown, with battery opening from battery. **battery** touching touching screwdriver.



terminals towards the
Disconnect battery cables
Take care not to short the terminals, for example by them to the enclosure or by both of them with a

7. Using the socket wrench, loosen and remove the nuts, and put them in a safe place for later installation.
8. Lift the battery bracket off of the batteries.
9. Properly dispose of the spent batteries.
10. Place the new batteries on the backplate in the same way the old batteries were: with the terminals to the outside.
11. Place the battery bracket over the batteries, and securely fasten with the nuts.
12. Gently place assembly on back of enclosure as shown, with battery terminals towards the opening. Connect battery cables from inside scoreboard to battery, taking care to connect one pair of wires to one side of the battery, black wire to black terminal and red wire to red terminal. Connect the other pair of wires to the other side of the battery pack in the same way. Turn on the scoreboard with the power switch and verify that the digits light. Turn off the scoreboard.
13. Gently flip battery/backplate assembly over and align the holes in the backplate with the holes in the enclosure. Install the battery/backplate assembly into the back of the scoreboard using the screws and washers removed earlier.
14. Repeat steps 4 - 13 for the second battery/backplate assembly.

Standards followed

UL 48

Issue:2011/09/02 Ed:15 Rev:2012/05/04 UL Standard for Safety Electric Signs

CAN/CSA C22.2#207

*Issue:1989/01/01 Portable and Stationary Electric Signs and Displays General
Instruction No 1: 1989/10/01 - (R2008)*

FCC 47CFR 15B cIB

Issued: 2015/10/01 Title 47 CFR Part 15 Subpart B Unintentional Radiators Class A Verification

ICES 003

Issue:2004/01/01 Issue No.4 Interference-Causing Equipment Standard, Digital Apparatus



Customer Service Department
www.coloradotime.com
Email: support@coloradotime.com
Phone: +1 970-667-1000
Toll Free U.S. and Canada 1 800-287-0653
Fax: +1 970-667-1032