



Diving

Installation and User Guide



Manufacturer:

Colorado Time Systems
1551 East 11th Street
Loveland, CO 80537 USA

Sales: 1-800-279-0111 or +1 970-667-1000

Service: 1-800-287-0653 or +1 970-667-1000
Service Fax: +1 970-667-1032

Web: www.coloradotime.com
Email: support@coloradotime.com

Product Identification

Product: Wired Judging
Model Numbers:
JT-01, CB-01, IH-01

Power Specification

	DC 12V	USB powered
System	Max 1A	Max 0.5A
JT-01:	25mA with backlight	10mA backlight not possible
IH-01:	75mA	50mA

If a power supply is used with the Gen7 Wired Judging System, it must be a listed (for both US and Canada) ITE (UL 62368-1 and CAN/CSA-C22.2 No. 62368-1), LPS, Class II power supply that outputs a maximum +12VDC, 1A. A power supply that meets these requirements is shipped with each IH-01.

This equipment is intended for use below an altitude of 2000m (6500ft)

Information in this manual is subject to change without notice. Pictures and illustrations may not accurately depict your version. Please check our website for the most current information; our user manuals are available online in the customer service section of our website.

Part Number F1022, Rev. 202510
©2025 Colorado Time Systems. All rights reserved.

Contents

Product Overview	5
Hardware & Hardware Set Up	5
Basic Hardware Set Up	5
Judges Terminal (JT-01).....	6
Cable Breakout Box (CB-01)	6
Interface Hub (IH-01).....	7
Connecting to a Scoreboard	7
Legacy Scoreboards	
Hardware Connection Diagrams	8
Basic Setup with 3 Judges.....	8
Diving panel split across pool	9
GEN7 Diving Software	11
Gen7 Diving Main Screen	11
Gen7 Settings Screen.....	12
Settings - General	
Settings - Scoreboard	
Settings - Name Display	
Settings - Judges Hardware	
Settings - Printing	
Add Meet	15
Edit Meet	16
Delete Meet	16
Current Meet	17
Add Event.....	18
Edit Event	19
Delete Event.....	19
Adding Divers to an Event	21
Add Diver.....	22
Edit Diver.....	23
Remove Diver.....	23
Set Dive Order.....	25
Export.....	26
Cut (Scratch) Diver	26
Run Event.....	27
Scoring Input	
Meet Management Connections.....	30
Helpful Tips	30
Simultaneous Events	31
Key Points	31
Meet Setup	31
Judge Connection (Reconnection).....	31
Event Loading	31
Scoreboard Operation	32
Troubleshooting	33

Product Overview

Gen7 wired judging is a system of connected terminals for judges to enter awards. Efficient and simple to run, it scales from basic dual meets up through multi-day, multi-event championships.

The system is controlled by software designed around the logical structure of an event (Gen7 Diving and Artistic Swimming)

- Judges' terminals provide judges with the tools and information they need
- Hardware is easy to transition between panel styles (for example, from simultaneous 1-meter and 3-meter events to synchronized diving). This is managed through the software; there is no need to unplug and rearrange JTs and plug them in again.

This manual describes the hardware and hardware set up; on-screen help is provided in the software for each sport.

Hardware & Hardware Set Up

Basic Hardware Set Up

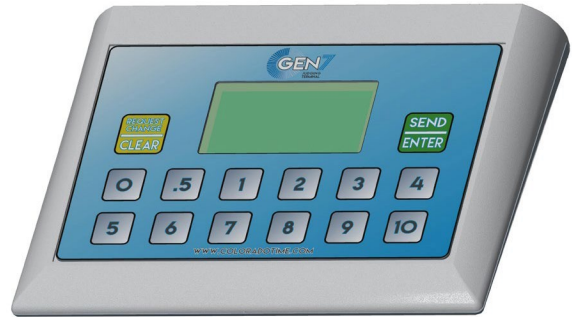
The most basic setup is a computer connected to an Interface Hub (IH-01) which is then connected to a Cable Breakout (CB-01). The Judges' Terminals (JT-01) are then connected to the Cable Breakout. You can chain cable breakouts together to allow you to split judges across the pool. This is useful for a 4/3 split of a 7-judge diving panel, or for placing half of the Artistic Swimming judges and controllers on each side of the pool.

More detailed hardware set up options are described later.

Judges Terminal (JT-01)

Use one judges' terminal (JT-01) for each judge. Connect a cable between the 4-pin connector on the JT-01 and one of the 4-pin connectors on a cable breakout box.

JT-01s that are plugged in to the system will turn on when there is power to the interface hub (either from the laptop through the USB cable, or from the external power supply). Before using the system enter a judge number on each JT-01. These numbers will then appear in the software. You can optionally assign a judge's name to each number through the software.



After the judge number is entered, the terminal will sit idle until the software communicates with it. Once a number has been set on the JT-01, the only way to change the judge number is to reset the terminal, either by unplugging it or by issuing a software reset command to all the terminals.

Judges' terminals have several modes; the sport software (Gen7 Diving or Gen7 Artistic Swimming) controls which mode is displayed. Judges Call mode displays the name of each judge on their respective terminal if the names have been entered in the software and is particularly useful when judges are finding their seats. In Judging Mode, the terminals are ready to accept awards from the judges. If running a sport that requires a single judge to enter multiple awards, the software controls the terminal in a way that guides the judge through the entry process.

The JT-01 screen has a backlight option, which can be turned on for all terminals in the software when the system is connected to AC power at the interface hub.

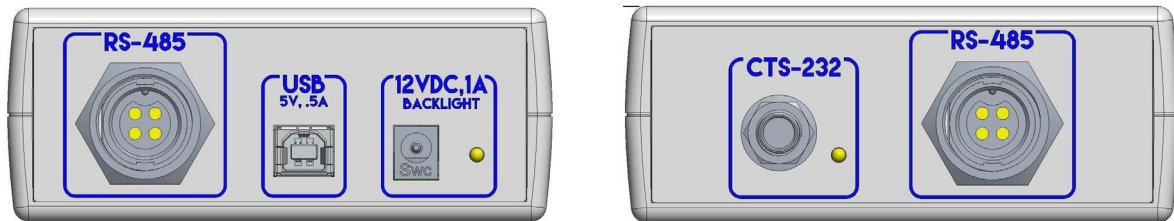
Cable Breakout Box (CB-01)

The cable breakout box (one or more) connects the JT-01s to the system. Each CB-01 has two ports labeled Input/Output: one on each side. Use either of these to connect to the interface hub and to subsequent CB-01s. If connecting JT-01s to the final CB-01 in the chain, you can use the empty Input/Output port as an additional connection for a terminal. While the connection for the designated Input/Output ports is the same as the ones for the JT-01s, the system will work best when cables to the interface hub and other CB-01s are connected at the ports labeled for them and not the ones labeled judges ports.



Interface Hub (IH-01)

The interface hub is the bridge between the computer running the software and the judges' terminals. It must be connected via USB to the computer and by cable from one of the 4-pin RS-485 ports either directly to a JT-01, or more typically to the CB-01, which is then connected to the JT-01s.



4-pin RS-485 ports: the two ports are identical and provide power and data to the connected judges terminals as well as data to numeric scoreboards and LED video boards.

USB: Connect a USB cable from here to the computer running the software. This is the data connection to the software. It will also provide +5V USB power to the system if the external power brick is not connected. AC power is optional for small systems with no scoreboard.

AC power is necessary for powering the backlight on the judges' terminals, sending data to a scoreboard, and for very long cable runs (more than 100'/30m). If using AC power, you must use the power supply that was shipped with your IH-01 or one that meets the same requirements as described in the inside front cover of this manual. The LED next to the power port turns green when the IH-01 is receiving AC power. If power is provided, the backlight on the JT-01s can be turned on through the software. Without external power to the IH-01 the system will be powered through USB from the computer, resulting in insufficient power to run the backlights. AC power also ensures performance for systems using very long (>75 meters) cable runs.

Connecting to a Scoreboard

First, connect the IH-01 to AC power. Next, connect to a scoreboard with a cable from an open 4-pin RS-485 port on an IH-01 or a CB-01:

- R-015-674-xx to connect directly to a numeric scoreboard (e.g., Otter Diving Scoreboards)
- R-015-707-x to connect to a Gen7 scoreboard wall plate or deck plate

Gen7 wall plates have LEDs next to each node. If there is not enough power for the scoreboard data, the scoreboard node's LED will be red.

Legacy Scoreboards

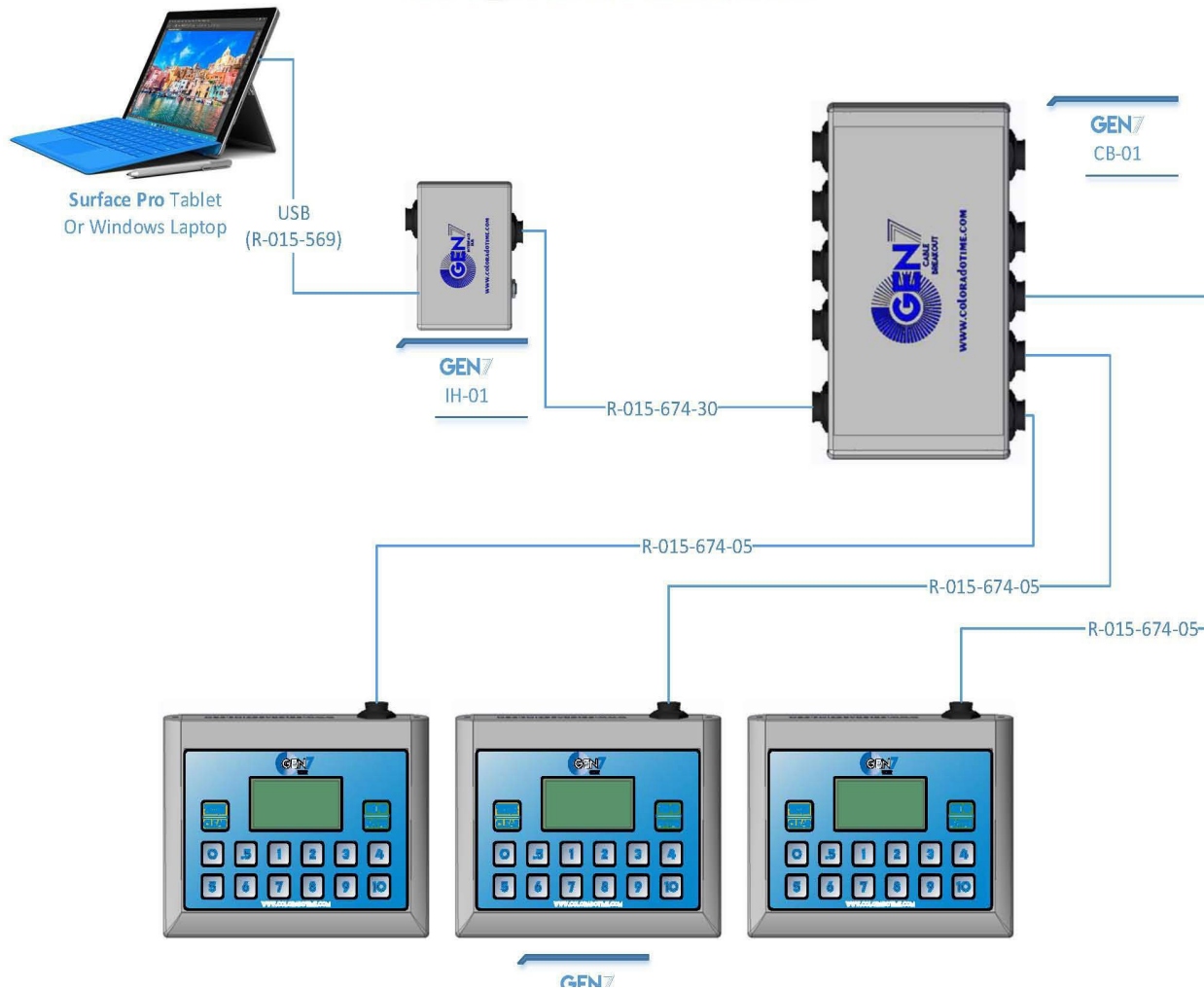
The IH-01 can also function as a legacy scoreboard converter. This functionality is not enabled by default and can only be enabled if the user owns the appropriate license. The LED next to the ¼" phono connector indicates the status of the converter (red is off, green is on).

First connect the IH-01 to AC power. Next, connect the IH-01 with a USB cable to the data source (the laptop for Diving, or a Gen7 timer). Finally, connect to the legacy scoreboard with an R-xxxDC cable from the CTS-232 port on the IH-01.

Hardware Connection Diagrams

Basic Setup with 3 Judges

Connect the equipment as shown, using cable lengths that are most appropriate for your facility and meet set up.

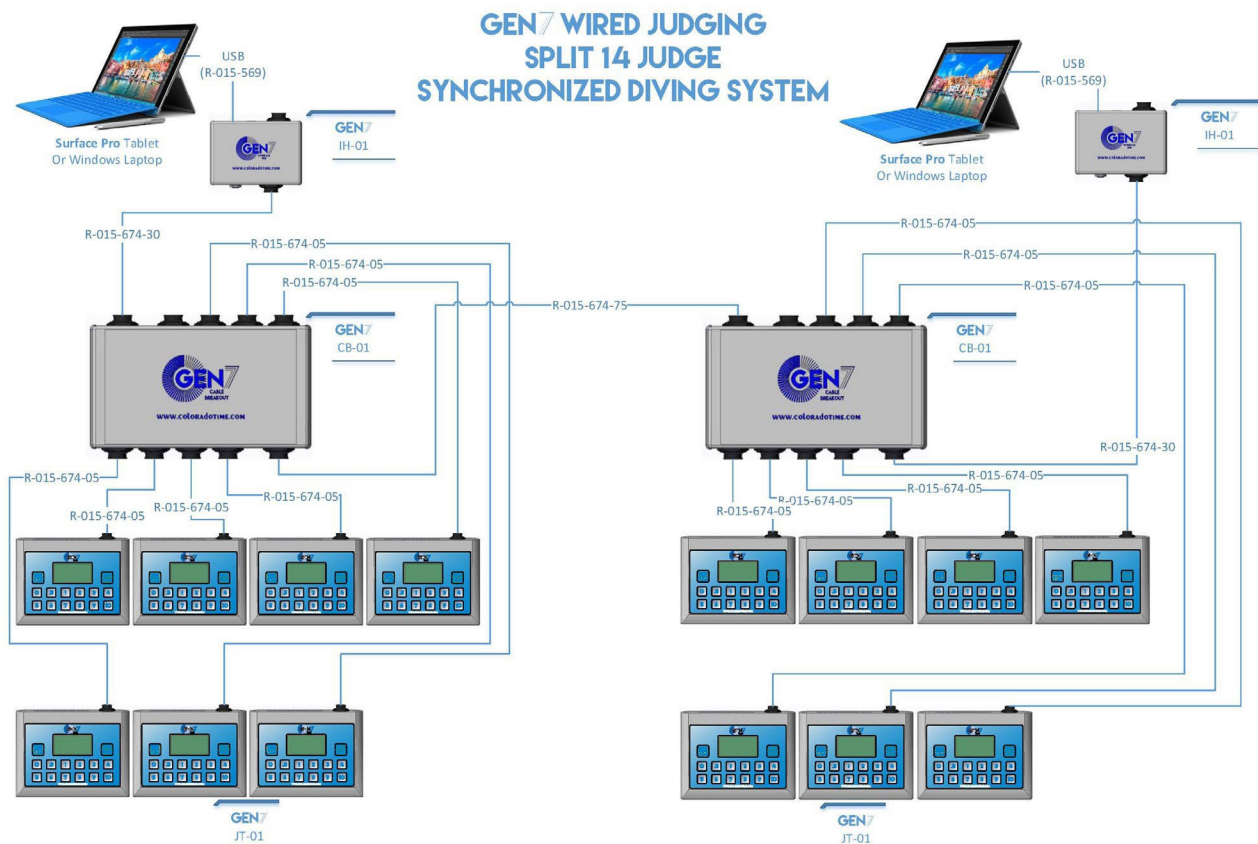


Diving panel split across pool

For a split panel, with judges on two sides of the pool, use two CB-01s. The physical set up shown below supports the split single panel as well as two separate panels for simultaneous events, with the adjustments made in the software.

Two simultaneous diving events (for example, 1-meter and 3-meter) with 7 judges each: Each event has 7 judges with 3 judges on the side of the pool closest to the diving boards used for that event and 4 judges on the opposite side.

Each event is run from a separate laptop. One of the two computers will instruct the system to enter multi-system mode by setting the system count to two systems. The operator will then perform a software reset and the judges' terminals will request a System ID before requesting a Judge Number. On one side of the pool, set 3 judges for System 1 and 4 judges for System 2. On the other side, set 4 judges for System 1 and 3 judges for System 2. Set one computer for System 1 and one computer for System 2.



Synchronized Diving event with 11 judges: The same physical setup supports a single panel which is split across the pool. Set the system count to one system and reset all the JT-01s. Log the judges back in, using the appropriate Execution/Synchronization pattern, and the same physical system is reconfigured for this event.

GEN7 Diving Software

Gen7 Diving Main Screen

Current Meet: Displays currently selected meet.

Current Event: Displays current event.

Meets: Displays list of available meets. Meet name, start date and number of events will be displayed. To select a meet, double-click on the meet name.

Add Meet: Click the Add Meet button  to create a new meet.

Edit Meet: Click the Edit Meet button  after selecting a meet in the list to delete the selected meet.

Delete Meet: Click the Delete Meet button .

Show Archived?: Toggle this selection to choose whether or not to display archived meets in the main meet selection screen. Archive old meets to keep your display easy to navigate.

Settings: Click the Settings button  to edit the settings of the Gen7 application.

Gen7 Settings Screen

The Settings screen allows customization of your GEN7 Diving software. There are 5 tabs:

General: Configure user interface preferences

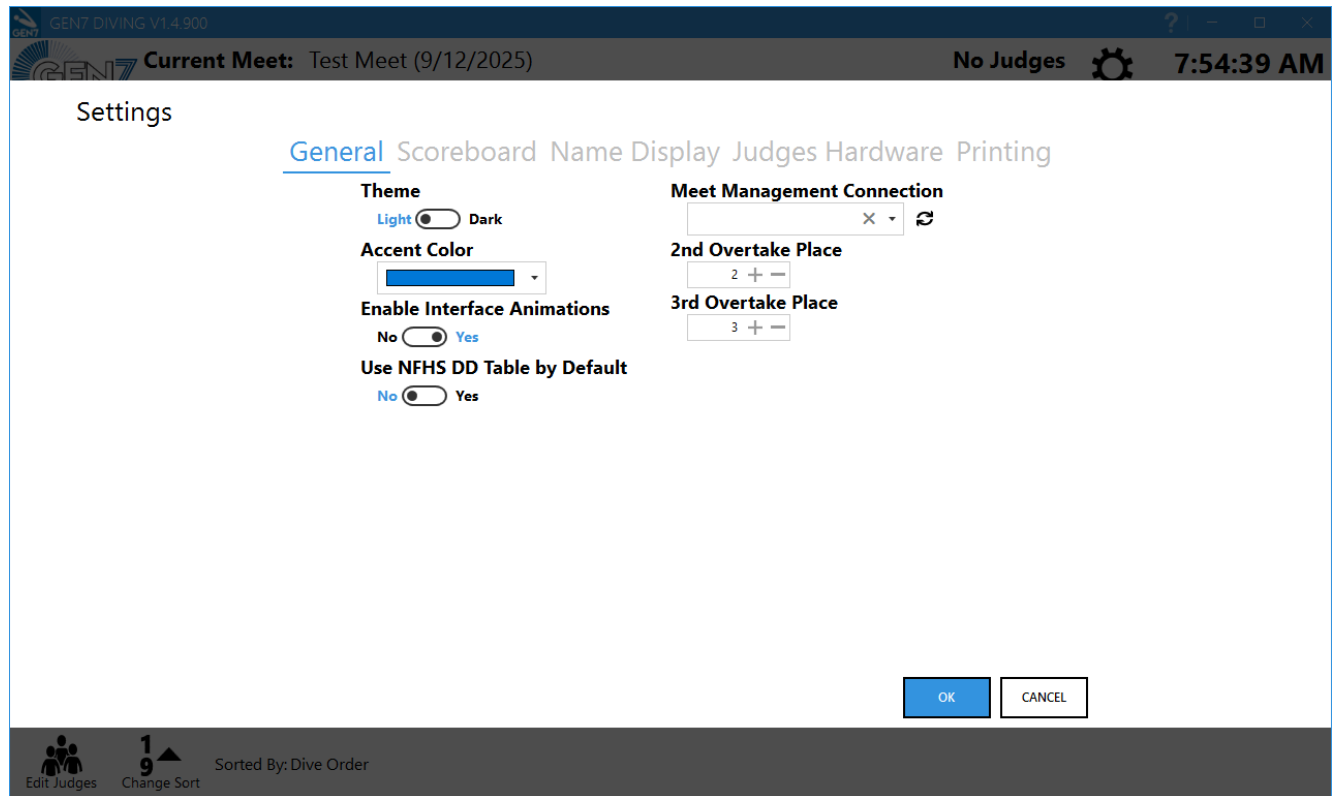
Scoreboard: Configure scoreboard settings.

Name Display: Configure how names are formatted on software screen, scoreboard and leaderboard, and in reports.

Judges Hardware: Configure judging system hardware.

Printing: Set up and configure printing preferences

Settings - General



The Settings screen allows customization of your GEN7 Diving software

Theme: Change theme from light to dark by moving the toggle switch

Accent Color: Change accent color by using drop-down menu.

Enable Interface Animations: Enable animations by moving toggle from No to Yes

Use NFHS DD Table by Default: Choose whether to use the NFHS Degree of Difficulty Table (as opposed to the World Aquatics formula) by default when creating new events. This setting can be controlled on a per-event basis.

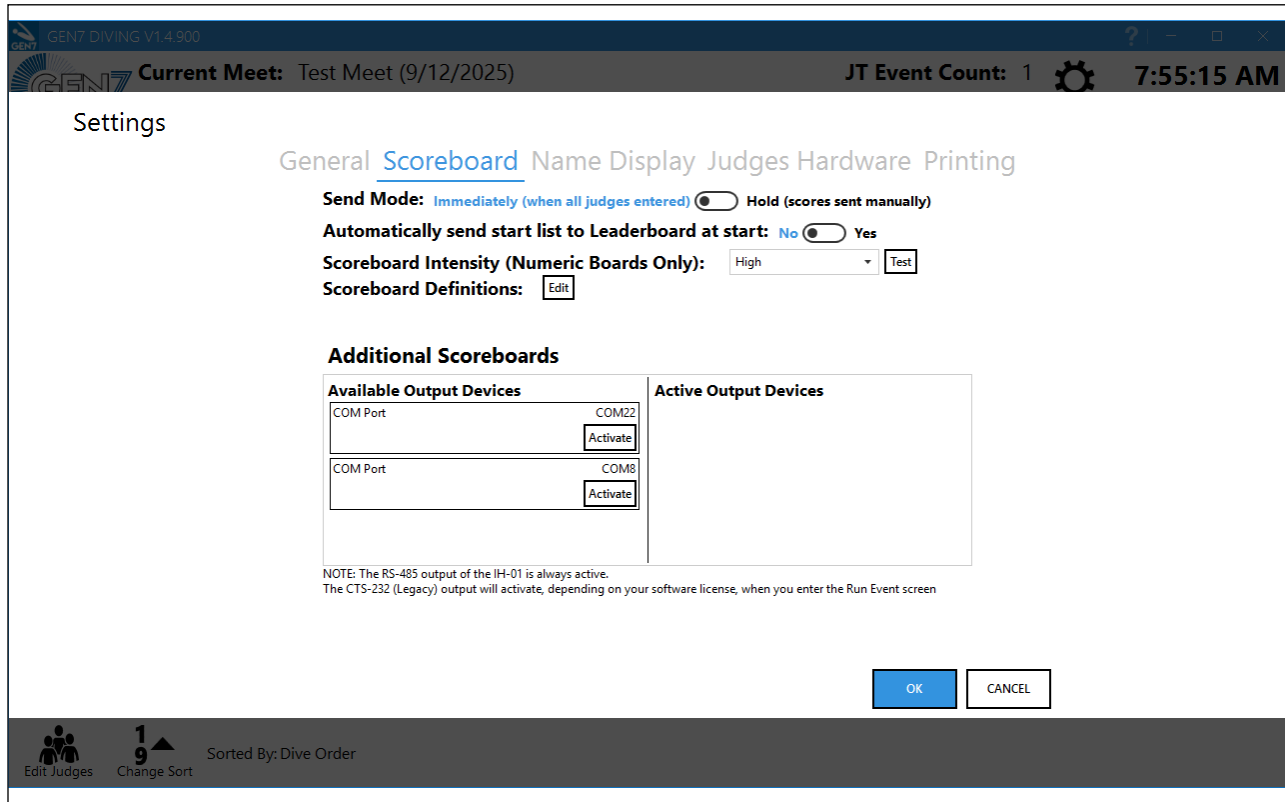
Meet Management Connection: Choose the Meet Management Connection by using the dropdown menu.

2nd Overtake Place: Use the increment (+) and decrement (-) buttons to change the second overtake place.

3rd Overtake Place: Use the increment (+) and decrement (-) buttons to change the third overtake place.

The 2nd and 3rd Overtake Places affect both the Run Event screen and the Scoreboard output.

Settings - Scoreboard



Send Mode: Switch from Immediately or Hold.

Immediately will send the scores automatically when all judges have entered their awards.

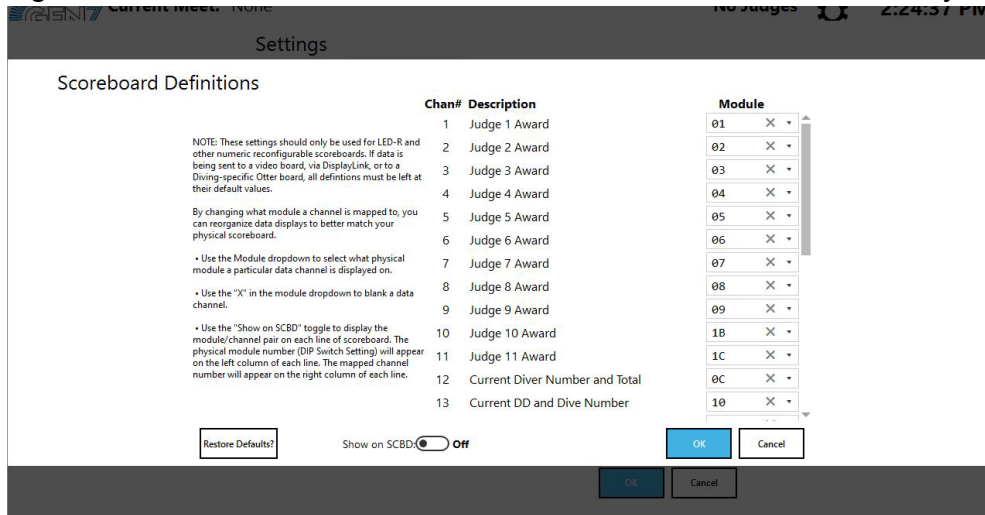
Hold requires the operator to manually send the scores to the scoreboard. This is useful for meets where a referee must approve scores before they are displayed.

Automatically send start list to Leaderboard at start: When enabled, Gen7 Diving will automatically send the list of divers (in dive order) to the leaderboard for display on a Video Board.

Scoreboard Intensity: Switch the intensity of the LEDs of a Numeric scoreboard. Click Test to view the scoreboard display with the selected intensity.

Scoreboard Definitions: Gen7 diving allows the location of scoreboard information to be changed without making physical changes to the scoreboard itself. Click the Scoreboard Definitions button to open a screen where a module on which a given data item can be selected.

If a data item is changed to appear on a different module and that module number is already assigned to a different data item, the modules numbers will effectively swap places.



Available Output Devices: Lists all available (secondary) output devices that are available to Gen7 Diving. NOTE: IH-01 standard scoreboard output (RS-485) is always enabled. IH-01 legacy scoreboard output (RS-232) is enabled based on license features.

Active Output Devices: Lists all active and configured secondary output devices.

Settings - Name Display

Settings

General Scoreboard Name Display Judges Hardware Printing

	Format	Casing
On-Screen (Indiv)	Last Name, First Name	As Entered
On-Screen (Synchro)	Last Name Only	As Entered
Scoreboard (Indiv)	Last Name, First Name	As Entered
Scoreboard (Synchro)	Last Name Only	As Entered
Leaderboard (Indiv)	Last Name, First Name	As Entered
Leaderboard (Synchro)	Last Name Only	As Entered
Reports (Indiv)	Last Name, First Name	As Entered
Reports (Synchro)	Last Name Only	As Entered

OK CANCEL

Edit Judges Change Sort Sorted By: Dive Order

This screen allows you to configure the format and casing for both individual and synchro events. Options are provided to control name display in the following places:

- **On-Screen:** how names are displayed in all places in the Gen7 Diving application where a diver's name is displayed
- **Scoreboard:** how names are displayed on LED Video boards (as well as Judges' Terminals)
- **Leaderboard:** how names are displayed on LED Video boards when showing Gen7 Leaderboard data
- **Reports:** how names are displayed on all generated reports.

Settings - Judges Hardware

Settings

General Scoreboard Name Display Judges Hardware Printing

Show All Judges Awards on Terminals
 Yes Terminal Info and Update

Info on Terminals

Dive/DD Show Diver Name Show Diver Team Show

Which Referee Terminals?
None

Enable Simultaneous Events on Terminals

Simultaneous Event Count Reset All JTs
1

Current Simultaneous Event ID#
1

OK CANCEL

Edit Judges Change Sort Sorted By: Dive Order

NOTE: This tab will only be enabled if the software detects an IH-01

Show All Judges Awards on Terminals: Select Yes to have the judging terminals display all the judges' awards after they have been entered. This is helpful for events where judges cannot see the scoreboard.

Info on Terminals: To show or hide the information displayed on the judging terminals, select Hide or Show

Simultaneous Event Count: Clicking the arrow at the right side of the Simultaneous Event Count drop-down box you can set the total number of systems operating in the simultaneous mode. You have the option to set the count as one, two, three or four.

Set Event Count: This button will set the current systems value to the setting that is display in the Current Simultaneous System ID#.

Reset All JTs: This button will set the current systems value to the setting that is display in the Current Simultaneous System ID#.

Current Simultaneous System ID#: When using simultaneous systems this setting allows you to set ID# of the system that is running this instance of the software.

Settings - Printing

GEN7 DIVING V1.4.900

GEN7 **Current Meet:** Test Meet (9/12/2025) JT Event Count: 1 7:55:27 AM

Settings

General Scoreboard Name Display Judges Hardware Printing

Paper Size

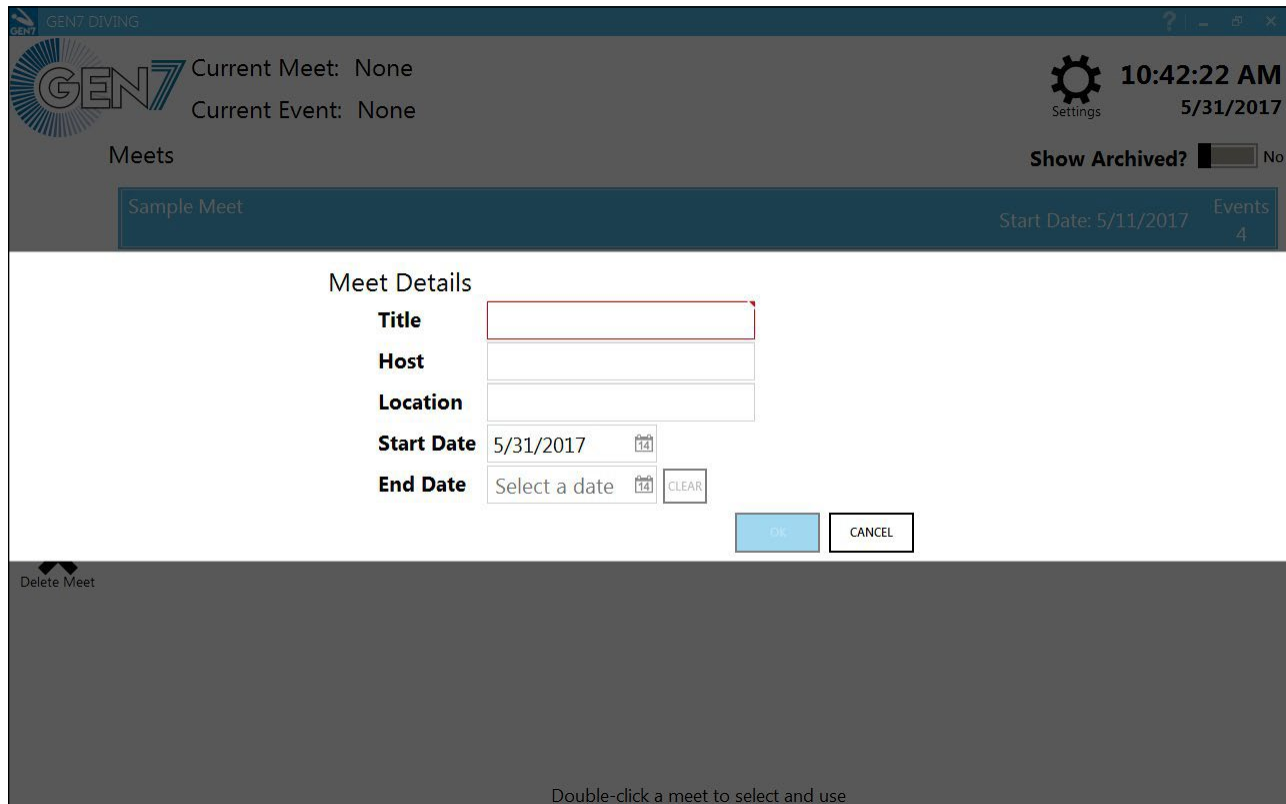
Letter

OK CANCEL

Edit Judges Change Sort Sorted By: Dive Order

Paper Size: Select the proper paper size that you will be printing on. You have a choice between Letter and A4 paper sizes. When printing you will automatically get a print preview prior to printing.

Add Meet



Adding a new meet: When you press the button you will be prompted with a screen that is requesting the Meet Details. These details will be used to populate various fields in the application as well as information which is used on the printed formats.

Title: The title of the event **must** be entered into this field. **REQUIRED**

Host: The name of the organization that is hosting the event. **OPTIONAL**

Location: The location of the event can be entered here. **OPTIONAL**

Start Date: This date should correspond with the first day that the meet will be held. The date can be typed into the textbox, or you may click on the calendar icon and use drop-down calendar to select the meet date.

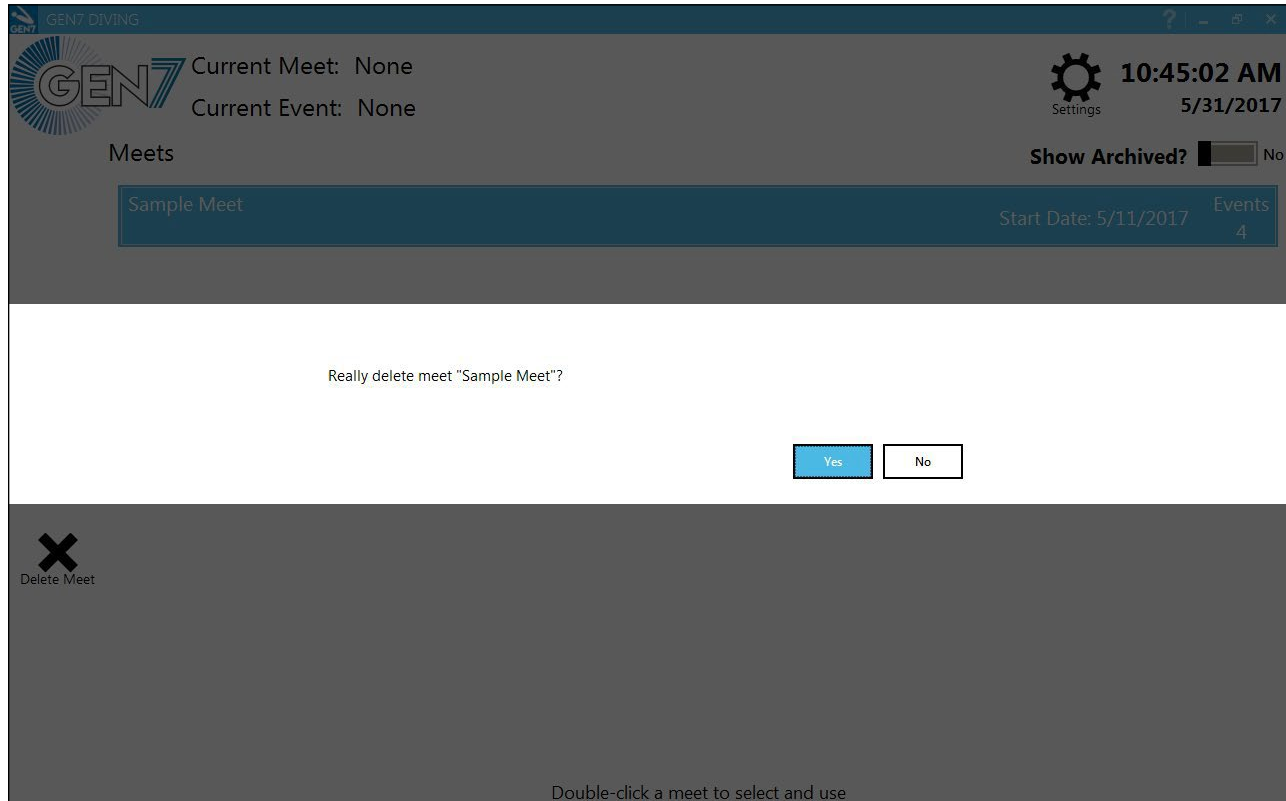
End Date: This date should correspond with the day the meet will end. This can be left blank for a one-day meet.

Press the OK button to accept the entries that you have made in the software. You may also press CANCEL to discard the information.

Edit Meet

The **Edit Meet** screen contains the same options as the Add Meet screen

Delete Meet



To Delete a Meet: Select a meet on the main screen and select Delete Meet. A Delete Meet confirmation screen will pop up.

Click Yes to confirm the file delete operation.

Click No to cancel the Delete Meet operation.

Current Meet

GEN7 DIVING

GEN7 Current Meet: Sample Meet (5/11/2017)
Current Event: None

Settings 10:43:54 AM
5/31/2017

Copy events from another meet

Events

Change Meet

1 **Women's Three Meter Finals Scored** Event Started
Judges: 7 Scoring, Cast-Out 2 High and 2 Low Divers: 99

2 **Men's Platform Synchro Finals Scored**
Judges: 11 Scoring, Synchro Divers: 94

3 **Women's Platform Finals Unscored**
Judges: 7 Scoring, Cast-Out 2 High and 2 Low Divers: 97

4 **Men's Three Meter Synchro Finals Unscored**
Judges: 11 Scoring, Synchro Divers: 99

Add Event

Edit Event

Delete Event

Double-click an event to select and use

Once you've selected your meet, you will be presented with a list of events in that meet.

Use the **Copy events from another meet** button to copy the event structure from a meet already in your database. This is useful if you use the same event structure for each meet. NOTE: this will not copy diver/dive data.

Use the buttons on the left-hand side to add new events to your meet, edit the selected event or delete the selected event.

Double-click an event to select and use the event. This will take you to the next screen where you can add and edit divers and dives.

Add Event

Event Details

Event Number +/- **Tag**

Start Date

Event Type

Custom Indiv. AQUA DDs

Number of Dives

Number of Judges

Cast out 1 High, 1 Low 2 High, 2 Low

Gender

Round

Age Group Open Limited Custom

Event Details: allows you to edit the configuration of a single event for a meet.

Event Number: Using the +/- buttons you can increment or decrement the event number, you may also just type the number into the input box. This field will only accept numerical values.

Tag: You may tag this event with a text string. This is used on-screen and on printouts. (e.g., you can designate Semifinal A and Semifinal B).

Event Type: Select a pre-configured event type here or select Custom or Combined.

Custom: Create a custom event by selecting the Board, Indiv/Synchro and DD table.

Combined: Combined events allow multiple event types to be run at the same time. For example, you could create a combined event with Girls and Boys if you are running a Coed Highschool meet.

Edit Combined Events

+
Add Event

Order	Gender	Board	Rounds	Tag	
1	Girls'	1m	6 +/-	Tag	↑ ↓ 🗑️
2	Boys'	1m	6 +/-	Tag	↑ ↓ 🗑️

Number of Dives: Use the slider to adjust the number of dives in the event.

Number of Judges: Use the slider to adjust the number of Judges that will be scoring the event.

Cast Out: Select the radio button corresponding to the correct number of judges' awards that shall not be used in the calculated score for all dives.

Gender: Select the radio button corresponding to the proper gender selection for the event.

Round: Select the radio button corresponding to the correct round for this event.

Age Group: Select Open if this event allows divers of any age to compete in this event. If you select "Limited" you will be asked to provide a Lower and Upper range for the ages of the divers.

When you have completed your entries, you may select "save and close" to save and return to the main screen. You may click "save and new" to save this event and start another new event. Or you may select cancel to discard all of changes you have made to an event.

Edit Event

The **Edit Event** screen contains the same options as the Add Event screen with the only change being that you can only chose to save the changes by clicking OK or by discarding the changes by clicking the CANCEL button.

After an event has been started, some options will no longer be available because changing them would affect the scoring of the event.

Delete Event

Delete Event: To delete an event simply click the Delete Event Button and you will be presented with the delete event confirmation dialog box. Select Yes to delete the event or select No to cancel the delete operation.

Adding Divers to an Event

The screenshot shows the GEN7 DIVING V1.2.1 software interface. At the top, it displays 'Current Meet: Sample Meet (8/14/2023)' and 'Current Event: Women's 3m'. On the right, it shows 'JT Event Count: 1', 'JT Event ID#: 1', and the time '12:00:00 PM' on '1/1/2023'. A toolbar contains icons for 'Change Event', 'Add Diver', 'Edit Diver', 'Remove Diver', 'Set Diver Order', 'Export', and 'Cut (Scratch) Diver'. Below the toolbar is a table header with columns for '1 LASTNAME, FirstName' and 'TEAM'. On the left side, there are buttons for 'Waiting Mode', 'Judges' Call', 'Run Event', 'Edit Event', and 'Reports'. At the bottom left, there are 'Edit Judges' and 'Change Sort' buttons. On the right side, there is a list of events with their IDs and scores:

1	5333D	2.5
Reverse 1½ Som. 1½ Tw. Free		
2	405C	2.7
Inward 2½ Som. Tuck		
3	305C	2.8
Reverse 2½ Som. Tuck		
4	201C	1.7
Back Dive Tuck		
5	106C	2.5
Forward 3 Som. Tuck		
6	403C	1.9
Inward 1½ Som. Tuck		

When you Double Click an event name you will set the event as your active event and are able to Run, Edit

Add Diver: Click the Add Diver button to enter the Diver Details dialog box.

Add Diver

The screenshot shows the 'Add Diver' interface. At the top, there is a toolbar with icons for 'Change Event', 'Add Diver', 'Edit Diver', 'Remove Diver', 'Set Diver Order', 'Export', and 'Cut/Scratch/DQ Diver'. Below the toolbar is the 'Diver Details' form. The form has four main input fields: 'Name' (containing 'LASTNAME, Firstname'), 'Team', 'Dive Order' (with an 'x' icon and an 'Alternate?' checkbox), and 'Starting Score' (with an 'x' icon). To the right of these fields is a table with six rows, each representing a dive. The table has three columns: a number (2-6), a label ('Dive #2' through 'Dive #6'), and a score ('0.0'). A red error message 'The Athlete field is required.' is positioned above the 'Name' field. At the bottom of the form are three buttons: 'SAVE AND CLOSE', 'SAVE AND NEW', and 'CANCEL'.

When you click the Add Diver button the Diver Details input screen will pop up.

Name: Enter the diver's last name followed by a comma and then their first name.
REQUIRED

Team: Enter the diver's team name. This will auto-populate if the diver already exists in the current meet.

Sub-Event: If you are running a combined event, use this dropdown to select which sub-event this diver is competing in. Drop down only available when event is set up as a combined event.

Dive Order: Enter the diver order number that this diver will be in for the event. This can be left blank and the order can be assigned after all divers are entered. You can flag a diver as an alternate if you wish to enter them but not have them placed in the diving order.

Starting Score: If the starting score for this diver is something other than zero you may enter the score here. Otherwise, you may leave the score blank.

Dive Entry: On the right of the Diver Details screen you will see a list of the dives. Enter the dive number in the area just to the right of each number. If you are running a platform event, you can also specify the platform level for each dive. The Degree of Difficulty based on the current World Aquatics formula (or NFHS table) will be automatically populated. For a High School event, you must designate dives and voluntary or optional (default). This designation is used for computing Max Voluntary DD as well as group representation (and other NFHS rules)

Once diver details are complete you can Click **SAVE** and **CLOSE** to return the event screen, Click **SAVE AND NEW** to enter data for the next diver, or you can click **CANCEL** to discard the information entered for this diver.

Edit Diver

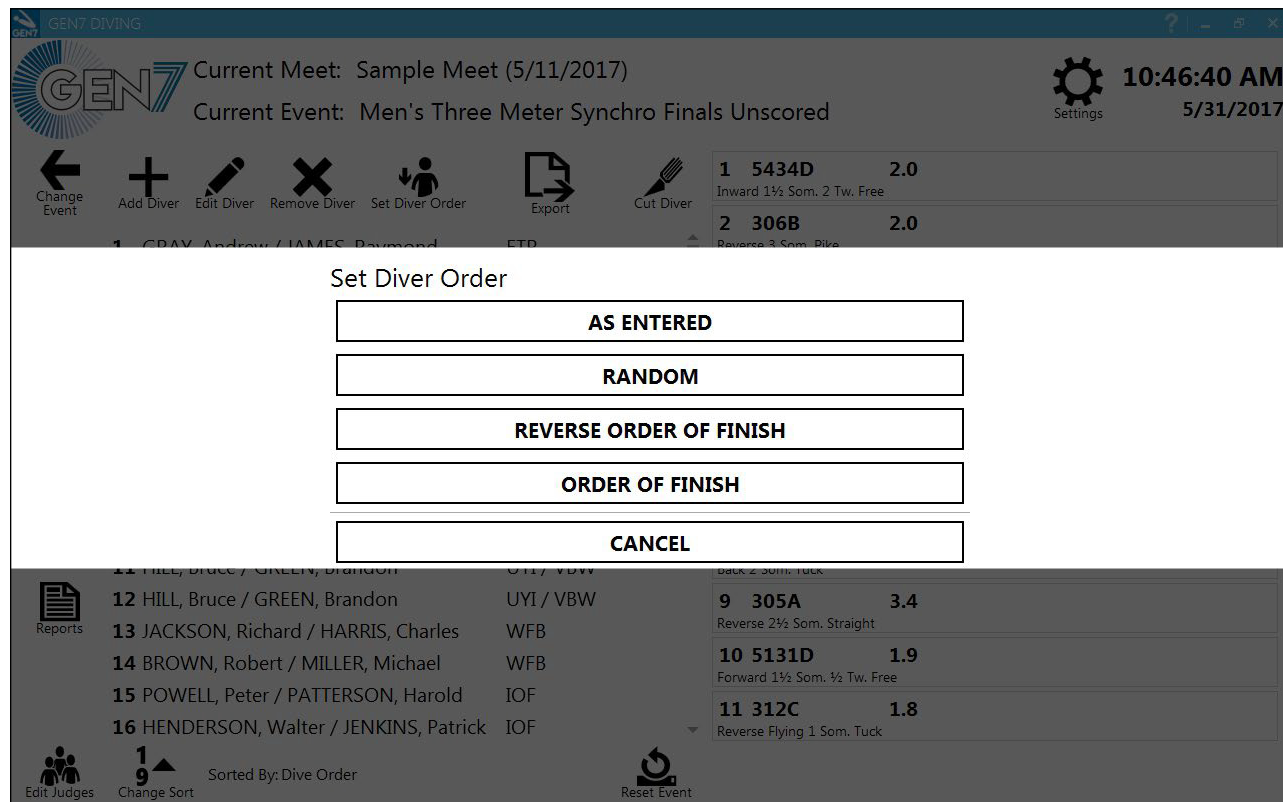
When you click the Edit Diver button the Diver Details input screen will pop up.

See the section **Add Diver** for a description of these options.

Remove Diver

To remove a diver from an event: Click on the name of the diver that you would like to delete. Click the Remove Diver button and the confirmation screen will appear. Click Yes to delete the driver. Click No to cancel the delete driver operation.

Set Dive Order



When you click on the Set Diver Order button you are presented with the following options.

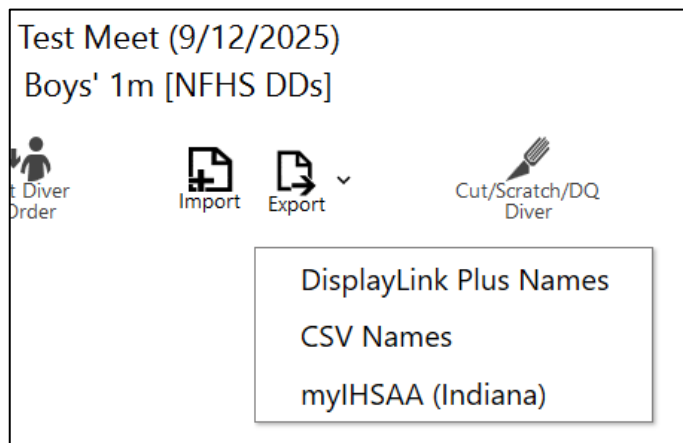
As Entered: This will set the event diver sequence to order that the diver data was entered. If data was loaded from Meet Management software, this will use the order established by that MM software.

Random: This will set the event diver sequence to a randomly generated order.

Reverse Order of Finish: This will set the event diver sequence to the reverse order of Finish from the last round (this uses the starting score).

Order of Finish: This will set the event diver sequence to the same order of finish from the last round (this uses the starting score).

Export



When you click on the Export icon a drop-down box will appear with two options.

DisplayLink Plus Names: Clicking this option will output the names to an XML file that can be read by the DisplayLink Plus control software. NOTE: if you are using RS-485 data with DL+, you do not need to load names manually.

CSV Names: Clicking this option will output the names to a CSV (comma separated values) file that can be read by other applications.

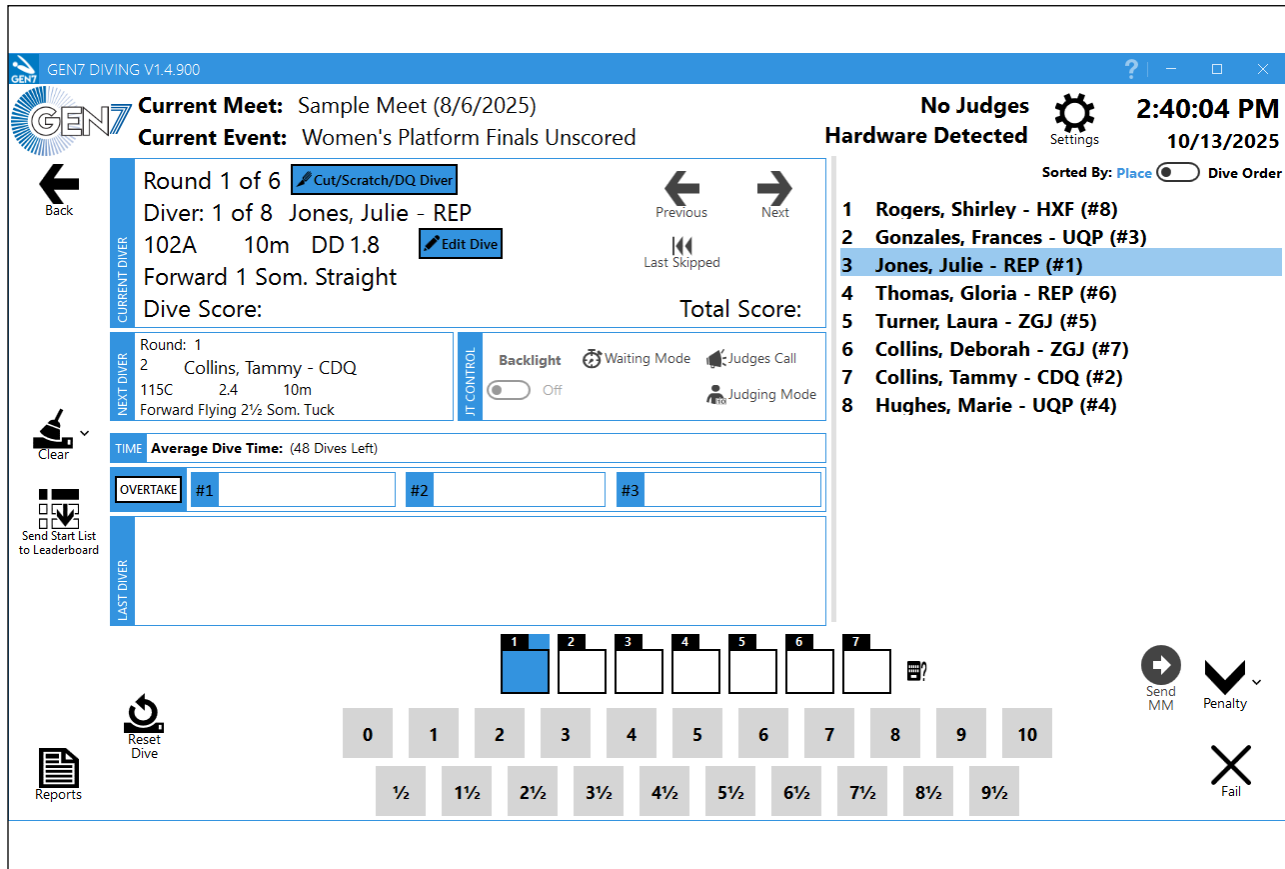
myIHSAA (Indiana): Export CSV data for the myIHSAA reporting system. Please contact CTS if your state high school association has an import/export format that you would like to see implemented.

Cut (Scratch) Diver

When you click the Cut (Scratch) Diver button from the current event you will be presented with a confirmation dialog box. If the diver has not yet completed a dive, you will need to confirm if this is a **Scratch** or a Disqualification (**DQ**). If the diver has already completed at least one dive, you will need to confirm if this is a **Cut** or a **DQ**.

Cut/Scratched divers remain in the diver order but are skipped. Disqualified divers are automatically moved to the end of the rankings. Make sure you perform the same operation in your meet management software.

Run Event



When you click the Run Event button you will be presented with the Run Event display.

Current Diver: Displays the information for the current diver that is being judged. You can quickly scratch a diver from here.

Previous and Next Icons: These allow you to navigate forward and backward through the diving order.

Edit Dive: Allows you to edit the dive “on the fly”.

Next Diver Information Box: Gives you insight to the next diver in the dive order.

JT Control: Allows you to control some of the features of the Wired Judging Terminal.

- Backlight - Use to toggle the backlight control ON or OFF on the judging terminal.
- Waiting Mode – Informs the judges that you are solving an issue at the control table and asks them the “Please Wait.”
- Judges Call – Displays the judge number, name, and panel designator (A or B). Use this mode to help judges find their seats before the event or when switching panels.
- Judging Mode - Click to switch the judging mode input from terminal to console.

Clear: Opens the scoreboard information dialog box which allows you to clear the scores, leaderboard or both from the scoreboard display.

Send Start List to Leaderboard: Resets the leaderboard data to reflect the dive order of the event. You can use this prior to starting the event so that videoboard shows the dive order.

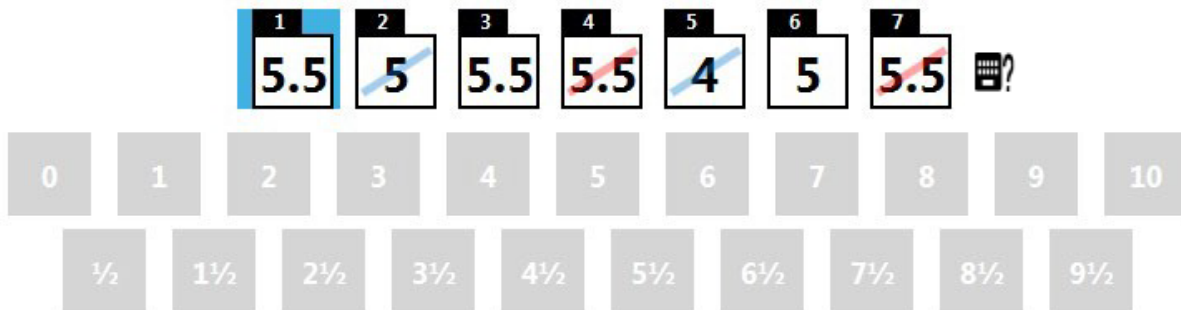
Time: Displays the average time per dive and the estimated time of event completion. This is a rolling average based on the last 10 dives completed.

Overtake Information Box: Displays the points required for the current diver to overtake positions #1, #2 or #3.


Last Diver Information Box: Displays the scoring information for the diver that just had scoring completed.

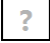
Reset Dive: Restarts the process to reset the judges scoring for the current diver. A confirmation will be required to ensure you would like to proceed.

Scoring Input



The scoring input will reflect the judges entries as they are entered. You will be able to see which judges have or have not scored the diver.

When running manually or overriding a score you can click on the judge number and select the score to be entered for that judge. You may also use your PC keyboard to enter scores. Click  to learn more about keyboard scoring.

If a Judge's input box shows a question mark , this means the interface hub could not find that judge's terminal. Check your cables and make sure the terminal is properly configured (i.e., has the correct judge number set).

Resend Scores: Resends the scoring information to the scoreboard.

Penalty: Opens a drop-down menu allowing you to assess the required penalty for the dive. All penalties are reversable. Changing the penalty will resend data to the scoreboard and meet management software.

Fail: Marks the dive as failed and scores it accordingly. You can use this option again to "Un-Fail" the dive.

Reports: Opens the reports dialog box giving access to the available reports for the event.

Meet Management Connections

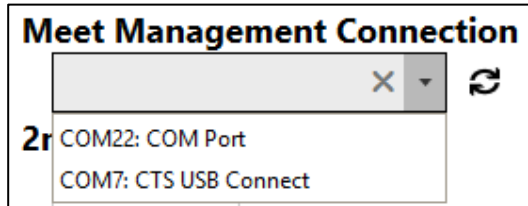
Gen7 Diving can interface with external Meet Management software. The interface supports both data import before an event begins and real-time data export during the event so judges awards can be shared with Meet Management software.

The Meet Management interface requires a connection between the computer running Gen7 Diving and the computer running your Meet Management software. This connection can be achieved with either of the following setups:

1. Two (2) USB-to-9pin adapters with a null-modem and a gender changer
2. A CTS USB Connect device with two USB cables.

After connecting the two computers, follow these steps to transfer data from your meet management computer to Gen7 Diving:

1. Create a new meet in Gen7 Diving
2. Open **Settings** and navigate to the **General** tab.
3. Select the device being used for the meet management connection and click **OK**



4. In your meet management software, start the transfer process (consult the documentation for your meet management software for more details on how to transfer data from your meet management software to Gen7 Diving.)
 - a. You will see an "Incoming Data" notification in the lower right portion of the screen.
5. Once the import is complete, select the newly created event and set any properties that may be required.
 - a. Depending on your meet management software, you may need to set the number of judges, whether to score the event as synchro, etc.
6. You can now run the event. Data will be transferred back to the meet management software as soon as all judges have entered an award.
 - a. If you are using **Hold Mode**, scores will not transfer until you click **Send Scores**

Helpful Tips

- If you make any changes to an event in your meet management software after you have imported data to Gen7 Diving, you should re-import the data.
- If a judge wishes to change an award after they have been sent to the meet management software, make sure the changed score is manually entered into the meet management software.

Simultaneous Events

You can use the Gen7 Diving hardware to run multiple, simultaneous events. Up to 4 events can be run at a time. This advanced feature of the Gen7 Diving system allows you to use less cable and simplify the connections to your scoreboard. A common scenario would be running a 1m and a 3m event at same time. Each event still has its own set of judges, but you only need one cable to cross the pool and one cable to connect to the scoreboard.

This section will assist you in the finer details of running simultaneous events.

Key Points

There are a few things to remember when setting up for simultaneous events:

- All judges and all interface hubs sit on the same cable bus
 - This is the same bus that connects to DisplayLink Plus
- Each computer needs an interface hub.
- Each computer needs to be set to a different simultaneous event ID (1-4)
- There must always be one (and only one) computer set as simultaneous event ID 1
 - Simultaneous event ID 1 acts as the coordinator for the entire bus; without it all communication will cease.

Meet Setup

1. Make sure each IH-01 is connected to the shared data bus.
2. Plug external power in to each IH-01
3. Connect each IH-01 to its respective computer via USB cable.
4. Connect the Gen7 Computer and the meet management computer via the USB Connect Device USB-to-9pin adapters with a null-modem and a gender changer.
5. Start the Gen7 Diving Software
 - a. Enter settings, then Judges Hardware and set the simultaneous event count to 4 (or the maximum simultaneous events you will be running)
 - b. Set the **Current Simultaneous Event ID** to a different number on each computer being sure to designate one computer as #1
 - c. Click back to the General Tab and select the “Serial Extender” listed under Meet Management Connection.”
 - d. Click OK

Judge Connection (Reconnection)

If the computers have been started with the correct settings, judges can be connected and reconnected with ease.

1. Connect a judge cable (R-015-674-05) between the breakout box (CB-01) and a judges' terminal (JT-01). When the terminal powers on, enter the Event ID then enter the judge number.
2. If you need to change the event/judge number of a terminal, simply unplug the terminal and plug it back in.

Event Loading

1. Make sure Gen7 Diving has a meet selected. It is best to be on the Events screen (the list of all events in a selected meet)
2. Start sending data from the meet management computer.
 - a. Look for the “Incoming Data” label in the bottom right corner.

3. After the transfer is complete, verify that the correct data was transferred.
 - a. Double check the judge configuration (number of judges, number of cast-outs)
 - b. Double check the names for any unexpected characters (question marks inside diamonds).

Scoreboard Operation

The scoreboard data is carried on the same bus as the judges' communication.

There are two important identifiers which need attention when building templates. The first is Timer Number. The second is pool number.

Timer number refers to the physical input on the DisplayLink computer. A timer is assigned to a specific com port. Often, the com port carrying swimming data is assigned to timer #1 and the timer assigned for diving data is assigned to timer #2. Make sure all the template items are assigned to the correct timer number.

The pool number is the term used in DisplayLink to refer to the Event ID in Gen7 Diving. Make sure all template items for a given event on the split board are all set to the same pool number.

If you set a specific template as the "next diver" template under Auto-Switch, this will ensure that there is always a diving template displayed when running an event.

You can select multiple items in a template by either dragging a selection box around the items or by holding the SHIFT key while clicking. If you only select dynamic template items (i.e., items that are driven by incoming data) you can edit properties like Timer Number and Pool Number. If you select non-Dynamic items, you will not be able to edit these properties.

Troubleshooting

Issue	Solutions
Backlighting on judges' terminals doesn't work	<ol style="list-style-type: none"> 1. Check that the interface hub is plugged into a working AC outlet. Backlighting on JT-01s is only available when it is. 2. Check that backlighting is enabled in the software.
Software won't let me run event with more than 8 divers	<ol style="list-style-type: none"> 1. IH-01 must be connected to the laptop. Check the cable between the two.
Data not displayed on scoreboard	<ol style="list-style-type: none"> 1. Check that the interface hub is plugged into a working AC outlet, and that the powerLED on the IH-01 is green. 2. Check cable connections to IH-01. 3. Follow scoreboard instructions on page 3.
The Judges Terminals power on but never leave the "Please Wait" screen even though the Gen7 software is in the Run Screen	<ol style="list-style-type: none"> 1. Make sure at least one computer is set to Simultaneous Event ID 1
Random Judges Terminals reset without warning	<ol style="list-style-type: none"> 1. On larger systems, additional power may be required. Try plugging in external power to each IH-01. If possible, have an IH-01 on each side of the pool.
Judges' Terminals receive data but cannot send awards	<ol style="list-style-type: none"> 1. Make sure you do not have any duplicate judges assigned to terminals



Customer Service Department
www.coloradotime.com
Email: support@coloradotime.com
Phone: +1 970-667-1000
Toll Free U.S. and Canada 800-287-0653
Fax: +1 970-667-1032