



## User Instructions

# Mini Scoreboard Caddy Assembly

### List of parts:

- 1 Base assembly with attached wheels
- 2 Uprights (60" or 74" aluminum extrusion)
- 48" tie down brace w/ brackets attached
- 2 T-brackets
- 4 T-Nuts
- 10 Flange Button Socket Cap screws 5/16-18 X 5/8
- 16 (or 20) M6 X 12 Button head cap screws

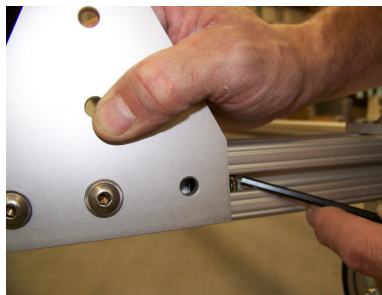
### List of tools:

- 1 4mm hex L-Key to mount scoreboards (Included)
- 1 3/16" hex L-key to assemble caddy (Included)
- Level
- Tie-downs and weights (such as sandbags or weighted buckets) to tie down caddy to prevent tipping

### Caddy Assembly

Your mini scoreboard caddy comes partially assembled from the factory. To complete the assembly, follow these instructions.

1. Loosely attach a T-bracket to one end of the base using three 5/16-18 X 5/8 flange button screws and the three T-nuts that are pre-installed in the outer track of the end rail, as follows:
  - Starting at one end of a bracket, insert the screw through the bracket and into the end T-nut. Hand tighten loosely so the bracket can slide in the extrusion



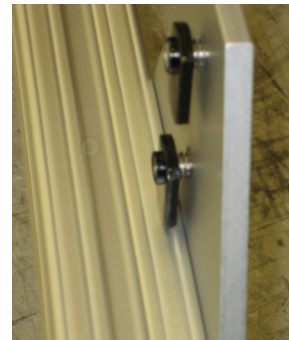
- Continue with the other two screws. Use the 3/16" hex L-Key to fine-tune the location of the T-nuts if necessary.

Colorado Time Systems  
1551 E. 11<sup>th</sup> Street, Loveland, CO 80537  
Phone: 970-667-1000 Fax: 970-667-1032 Toll free: 800-287-0653  
www.coloradotime.com E-mail: [customerservice@coloradotime.com](mailto:customerservice@coloradotime.com)

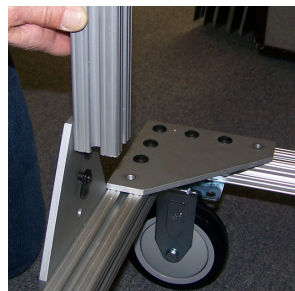
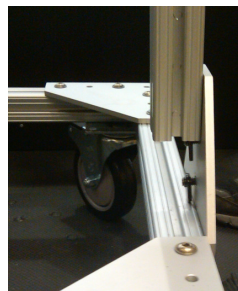
- Slide the T-Bracket along the track until the left edge is two inches from the right edge of the corner bracket on the base as shown. Tighten the screws to the T-nuts using the 3/16" Hex L-key.



- Install the other bracket to the other end in the same way, this time with the right edge of the bracket two inches from the left edge of the corner bracket so that the two T-brackets are parallel with each other.
- Install 2 Flange button screws and 2 T-nuts to the remaining holes of the T-bracket, with flat part of the T-nut towards the bracket, and leave loose.
- Slide the end of the upright that does not have a hole drilled through it on to the T-Nuts attached to the T-bracket, with the side with the larger holes toward the front of the caddy. NOTE: To achieve the proper center of gravity, the T-brackets and uprights are closer to the back of the caddy.



60" or 74"  
upright



- Repeat for the other side.
- Using the level, make sure that the uprights are perpendicular to the ground, and tighten the screws with the 3/16" L-key.

Colorado Time Systems  
 1551 E. 11<sup>th</sup> Street, Loveland, CO 80537  
 Phone: 970-667-1000 Fax: 970-667-1032 Toll free: 800-287-0653  
 www.coloradotime.com E-mail: customerservice@coloradotime.com

### Mounting your tie-down brace

Your tie-down brace goes on the back side of the caddy (the side with shorter distance between the uprights and the edge).

1. Hold it so the note that the caddy must be tied down is facing out, and slide the t-nuts into the top of the uprights. You may need to loosen them slightly to get them to slide well.
2. Use a level to make sure the brace is horizontally straight and level. Tighten the screws with the 3/16" hex L-key.
3. When the caddy is not stored, lock the wheels and use the eye-bolts on the ends of the brace to securely tie the caddy to weights (for example, sandbags or weighted buckets) to prevent it from tipping.



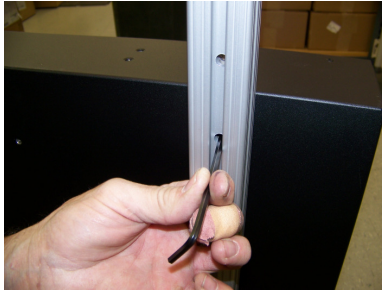
### Mounting your scoreboard modules

1. Install 4 M6 X 12 Button head cap screws into four outside threaded holes in the back of each scoreboard module leaving approximately 1/4" of thread showing.



2. Install the bottom scoreboard module onto the uprights by sliding the screws into the larger part of the keyhole and easing it down into the smaller part. Ensure that all four screws are in their respective keyholes. Tighten the screws using the 4mm Hex L-key.

Colorado Time Systems  
1551 E. 11<sup>th</sup> Street, Loveland, CO 80537  
Phone: 970-667-1000 Fax: 970-667-1032 Toll free: 800-287-0653  
www.coloradotime.com E-mail: customerservice@coloradotime.com



3. Continue working to the top adding the rest of the lines in the same way.

**When the caddy is not stored, lock the wheels. Use the eye-bolts on the ends of the brace to securely tie the caddy to weights (for example, sandbags or weighted buckets) to prevent it from tipping.**



Colorado Time Systems  
1551 E. 11<sup>th</sup> Street, Loveland, CO 80537  
Phone: 970-667-1000 Fax: 970-667-1032 Toll free: 800-287-0653  
www.coloradotime.com E-mail: customerservice@coloradotime.com